

53BP1 Antibody

Rabbit Polyclonal

Antigen Affinity Purified

Protein ID NP_005648.1

Catalog No. A300-272A

GeneID 7158

Lot No. A300-272A-7

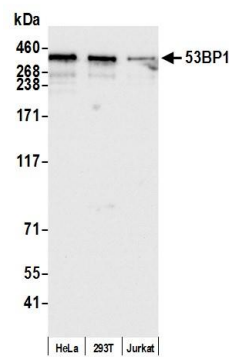


APPLICATIONS	WB, IP, IHC						
SPECIES REACTIVITY	Human, Mouse						
AMOUNT	100 µl						
CONCENTRATION	1000 µg/ml						
STORAGE/SHELF LIFE	2 – 8° C / 1 year from date of receipt						
PHYSICAL STATE	Liquid						
BUFFER	Tris-citrate/phosphate buffer, pH 7 to 8 containing 0.09% Sodium Azide						
ISOTYPE	IgG						
ORIGIN	USA						
PRODUCTION PROCEDURES	<p>Antibody was affinity purified using an epitope specific to 53BP1 immobilized on solid support.</p> <p>The epitope recognized by A300-272A maps to a region between residues 350 and 400 of human tumor protein p53 binding protein 1 using the numbering given in entry NP_005648.1 (GeneID 7158).</p> <p>Immunoglobulin concentration was determined by extinction coefficient: absorbance at 280 nm of 1.4 equals 1.0 mg of IgG.</p>						
APPLICATIONS	<p>Centrifuge tube to remove product from lid. Optimal working dilutions should be determined experimentally by the investigator. Prepare working dilution immediately before use.</p> <table><tr><td>Western Blot</td><td>1:10,000 – 1:25,000</td></tr><tr><td>Immunoprecipitation</td><td>2 – 10 µg/mg lysate</td></tr><tr><td>Immunohistochemistry</td><td>1:1,000 to 1:5,000. Epitope retrieval with citrate buffer pH6.0 is recommended for FFPE tissue sections.</td></tr></table>	Western Blot	1:10,000 – 1:25,000	Immunoprecipitation	2 – 10 µg/mg lysate	Immunohistochemistry	1:1,000 to 1:5,000. Epitope retrieval with citrate buffer pH6.0 is recommended for FFPE tissue sections.
Western Blot	1:10,000 – 1:25,000						
Immunoprecipitation	2 – 10 µg/mg lysate						
Immunohistochemistry	1:1,000 to 1:5,000. Epitope retrieval with citrate buffer pH6.0 is recommended for FFPE tissue sections.						
APPLICATION NOTES	<p>Western blot of immunoprecipitates performed using Normal Pig Serum (Cat. No. S100-020), Goat anti-Rabbit Light Chain HRP Conjugate (Cat. No. A120-113P) and 4-8% SDS-PAGE (link to IP-western blot protocol in Additional Info section below).</p> <p>Western blot of lysates performed using standard western blot reagents and 4-8% SDS-PAGE.</p>						
IHC HUMAN CONTROLS	Breast Carcinoma, Colon Carcinoma, Glioblastoma, Non-Small Cell Lung Cancer, Ovarian Carcinoma, Prostate Carcinoma, Stomach Adenocarcinoma, Testicular Seminoma						
IHC MOUSE CONTROLS	Renal Cell Carcinoma, Teratoma						
ADDITIONAL INFO	<p>https://www.bethyl.com/product/A300-272A</p> <p>Use the link above to view SDS, a current list of citations, and other product specific information.</p> <p>IP-western blot protocol https://www.bethyl.com/content/protocol_IP_WB</p>						

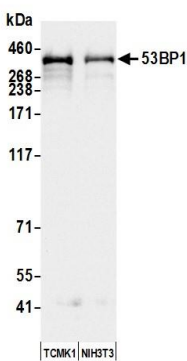
This document certifies that this product has met all of the quality control standards defined by Bethyl Laboratories, Inc.

Eric McIntush, PhD | Chief Scientific Officer

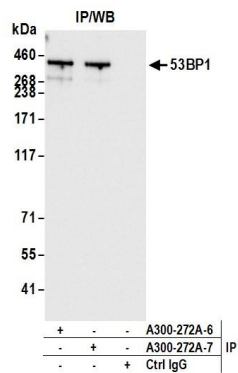
Date: December 31, 2019



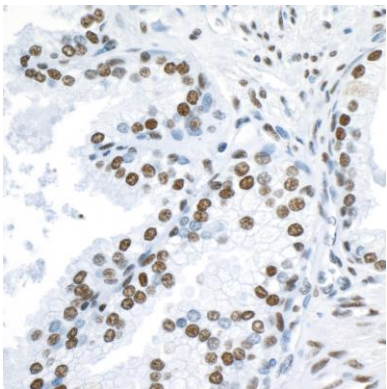
Detection of human 53BP1 by western blot. *Samples:* Whole cell lysate (15 µg) from HeLa, HEK293T, and Jurkat cells prepared using NETN lysis buffer. *Antibody:* Affinity purified rabbit anti-53BP1 antibody A300-272A (lot A300-272A-7) used for WB at 0.04 µg/ml. *Detection:* Chemiluminescence with an exposure time of 3 seconds.



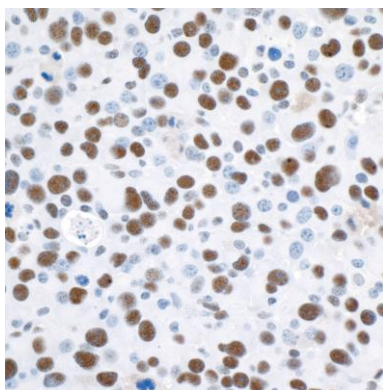
Detection of mouse 53BP1 by western blot. *Samples:* Whole cell lysate (50 µg) from TCMK-1 and NIH 3T3 cells prepared using NETN lysis buffer. *Antibody:* Affinity purified rabbit anti-53BP1 antibody A300-272A (lot A300-272A-7) used for WB at 0.04 µg/ml. *Detection:* Chemiluminescence with an exposure time of 3 seconds.



Detection of human 53BP1 by western blot of immunoprecipitates. *Samples:* Whole cell lysate (1.0 mg per IP reaction; 20% of IP loaded) from HEK293T cells prepared using NETN lysis buffer. *Antibodies:* Affinity purified rabbit anti-53BP1 antibody A300-272A (lot A300-272A-7) used for IP at 6 µg per reaction. 53BP1 was also immunoprecipitated by a previous lot of this antibody (lot A300-272A-6). For blotting immunoprecipitated 53BP1, rabbit anti-recombinant monoclonal antibody [BL-250-1H11] (A700-011) was used at 1:1000. *Detection:* Chemiluminescence with an exposure time of 1 second.



Detection of human 53BP1 by Immunohistochemistry. *Sample:* FFPE sections of human prostate carcinoma. *Antibody:* Affinity purified rabbit anti-53BP1 (Cat. No. A300-272A lot 7) used at a dilution of 1:5,000 (0.2 µg/ml). *Detection:* DAB.

**Detection of Mouse 53BP1 by Immunohistochemistry.**

Sample: FFPE sections of mouse renal cell carcinoma.

Antibody: Affinity purified rabbit anti-53BP1 (Cat. No. A300-272A lot 7) used at a dilution of 1:1,000 (1 µg/ml).

Detection: DAB.