

INT7 Antibody

Rabbit Polyclonal

Antigen Affinity Purified

Protein ID Q9NVH2

Catalog No. A300-271A

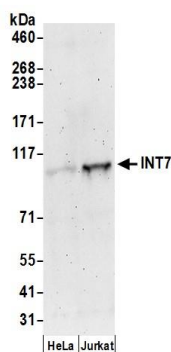
GeneID 25896

Lot No. A300-271A-1

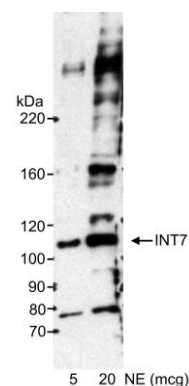


APPLICATIONS	WB, IHC
SPECIES REACTIVITY	Human
PRESUMED REACTIVITY	Based on 100% sequence identity, this antibody is predicted to react with Chicken and Bovine
AMOUNT	100 µl
CONCENTRATION	1000 µg/ml
STORAGE/SHELF LIFE	2 - 8° C / 1 year from date of receipt
PHYSICAL STATE	Liquid
BUFFER	Tris-citrate/phosphate buffer, pH 7 to 8 containing 0.09% Sodium Azide
ISOTYPE	IgG
ORIGIN	USA
PRODUCTION PROCEDURES	<p>Antibody was affinity purified using an epitope specific INT7 to immobilized on solid support.</p> <p>The epitope recognized by A300-271A maps to a region between residues 850 and 900 of human INT7 using the numbering given in TrEMBL entry Q9NVH2 (GeneID 25896).</p> <p>Immunoglobulin concentration was determined by extinction coefficient: absorbance at 280 nm of 1.4 equals 1.0 mg of IgG.</p>
APPLICATIONS	<p>Centrifuge tube to remove product from lid. Optimal working dilutions should be determined experimentally by the investigator. Prepare working dilution immediately before use.</p> <p>Western Blot 1:10,000 - 1:25,000</p> <p>Immunohistochemistry 1:500 - 1:2,000. Epitope retrieval with Tris-EDTA pH 9.0 is recommended for FFPE tissue sections.</p>
APPLICATION NOTES	Western blot of lysates performed using standard western blot reagents and 4-8% SDS-PAGE.
IHC HUMAN CONTROLS	Breast Carcinoma, Testicular Seminoma
ADDITIONAL INFO	<p>https://www.bethyl.com/product/A300-271A</p> <p>Use the link above to view SDS, a current list of citations, and other product specific information.</p>

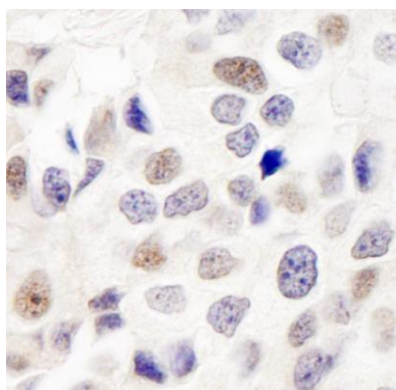
This document certifies that this product has met all of the quality control standards defined by Bethyl Laboratories, Inc.
Eric McIntush, PhD | Chief Scientific Officer Date: June 21, 2019



Detection of human INT7 by western blot. *Samples:* Whole cell lysate (50 µg) from HeLa and Jurkat cells prepared using NETN lysis buffer. *Antibody:* Affinity purified rabbit anti-INT7 antibody A300-271A (lot A300-271A-1) used for WB at 0.1 µg/ml. *Detection:* Chemiluminescence with an exposure time of 3 minutes.



Detection of human INT7 by western blot. *Sample:* Nuclear extract (NE) from HeLa cells. *Antibody:* Rabbit anti-INT7 antibody (Cat. No. A300-271A) used at 0.1 µg/ml. *Detection:* Chemiluminescence with an exposure time of 15 minutes.



Detection of human INT7 by immunohistochemistry. *Sample:* FFPE section of human breast carcinoma. *Antibody:* Affinity purified rabbit anti-INT7 (Cat. No. A300-271A Lot1) used at a dilution of 1:1,000 (1 µg/ml). *Detection:* DAB