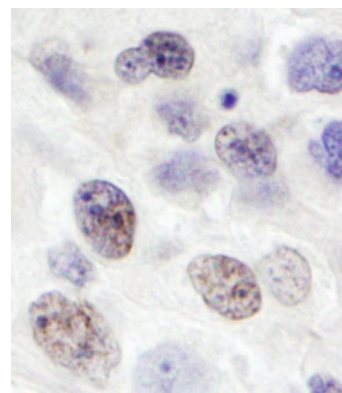


**Detection of human FLJ20530/KAONASHI1 by western blot.** *Samples:* Nuclear extract (NE) from HeLa cells. *Antibody:* Affinity purified rabbit anti-FLJ20530/KAONASHI1 antibody (Cat. No. A300-269A) used at 0.2  $\mu\text{g}/\text{ml}$ . *Detection:* Chemiluminescence with an exposure time of 20 minutes.



**Detection of human FLJ20530/KAONASHI1 by immunohistochemistry.** *Sample:* FFPE section of human breast carcinoma. *Antibody:* Affinity purified rabbit anti-FLJ20530/KAONASHI1 (Cat. No. A300-269A Lot1) used at a dilution of 1:1,000 (1  $\mu\text{g}/\text{ml}$ ). *Detection:* DAB