

# BARD1 Antibody

Rabbit Polyclonal

Antigen Affinity Purified

Protein ID NP\_000456.1

Catalog No. A300-263A

GeneID 580

Lot No. A300-263A-4



<b>APPLICATIONS</b>	WB, IP
<b>SPECIES REACTIVITY</b>	Human
<b>AMOUNT</b>	100 µl
<b>CONCENTRATION</b>	1000 µg/ml
<b>STORAGE/SHELF LIFE</b>	2 – 8° C / 1 year from date of receipt
<b>PHYSICAL STATE</b>	Liquid
<b>BUFFER</b>	Tris-citrate/phosphate buffer, pH 7 to 8 containing 0.09% Sodium Azide
<b>ISOTYPE</b>	IgG
<b>ORIGIN</b>	USA
<b>PRODUCTION PROCEDURES</b>	Antibody was affinity purified using an epitope specific to BARD1 immobilized on solid support.

The epitope recognized by A300-263A maps to a region between residues 250 and 300 of human BRCA1-associated RING Domain 1 using the numbering given in entry NP\_000456.1 (GeneID 580).

Immunoglobulin concentration was determined by extinction coefficient: absorbance at 280 nm of 1.4 equals 1.0 mg of IgG.

**APPLICATIONS** Centrifuge tube to remove product from lid. Optimal working dilutions should be determined experimentally by the investigator. Prepare working dilution immediately before use.

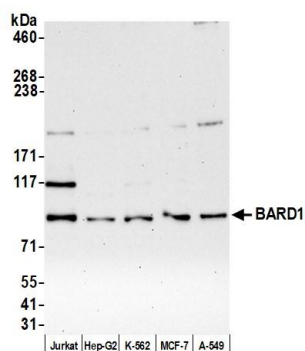
Western Blot 1:500 – 1:2,500

Immunoprecipitation 2 – 10 µg/mg lysate

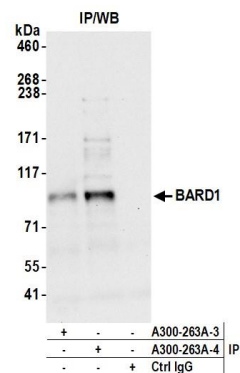
**ADDITIONAL INFO** <https://www.bethyl.com/product/A300-263A>

Use the link above to view SDS, a current list of citations, and other product specific information. IP-western blot protocol: [https://www.bethyl.com/content/protocol\\_IP\\_WB](https://www.bethyl.com/content/protocol_IP_WB)

This document certifies that this product has met all of the quality control standards defined by Bethyl Laboratories, Inc.  
Eric McIntush, PhD | Chief Scientific Officer Date: March 25, 2020



**Detection of human BARD1 by western blot.** *Samples:* Whole cell lysate (10  $\mu$ g) from Jurkat, Hep-G2, K-562, MCF-7, and A-549 cells prepared using NETN lysis buffer. *Antibody:* Affinity purified rabbit anti-BARD1 antibody A300-263A (A300-263A lot 4) used for WB at 0.04  $\mu$ g/ml. *Detection:* Chemiluminescence with an exposure time of 30 seconds.



**Detection of human BARD1 by western blot of immunoprecipitates.** *Samples:* Whole cell lysate (1.0 mg per IP reaction; 20% of IP loaded) from MCF-7 cells prepared using NETN lysis buffer. *Antibodies:* Affinity purified rabbit anti-BARD1 antibody A300-263A (A300-263A lot 4) used for IP at 6  $\mu$ g per reaction. BARD1 was also immunoprecipitated by a previous lot of this antibody (A300-263A lot 3). For blotting immunoprecipitated BARD1, A300-263A was used at 0.04  $\mu$ g/ml. *Detection:* Chemiluminescence with an exposure time of 10 seconds.