

# SAH3 Antibody

Rabbit Polyclonal

Antigen Affinity Purified

Protein ID NP\_056143.1

Catalog No. A300-261A

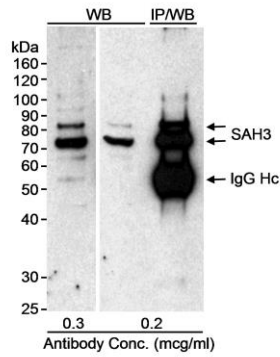
GeneID 23382

Lot No. A300-261A-1



<b>APPLICATIONS</b>	WB, IP
<b>SPECIES REACTIVITY</b>	Human
<b>AMOUNT</b>	100 µl
<b>CONCENTRATION</b>	1000 µg/ml
<b>STORAGE/SHELF LIFE</b>	2 - 8° C / 1 year from date of receipt
<b>PHYSICAL STATE</b>	Liquid
<b>BUFFER</b>	Tris-citrate/phosphate buffer, pH 7 to 8 containing 0.09% Sodium Azide
<b>ISOTYPE</b>	IgG
<b>ORIGIN</b>	USA
<b>PRODUCTION PROCEDURES</b>	<p>Antibody was affinity purified using an epitope specific to SAH3 immobilized on solid support.</p> <p>The epitope recognized by A300-261A maps to a region between residues 1 and 50 of human adenosylhomocysteinase 3 (KIAA0828) using the numbering given in entry NP_056143.1 (GeneID 23382).</p> <p>Immunoglobulin concentration was determined by extinction coefficient: absorbance at 280 nm of 1.4 equals 1.0 mg of IgG.</p>
<b>APPLICATIONS</b>	<p>Centrifuge tube to remove product from lid. Optimal working dilutions should be determined experimentally by the investigator. Prepare working dilution immediately before use.</p> <p>Western Blot 1:1,000 - 1:10,000</p> <p>Immunoprecipitation 1 - 4 µg/mg lysate</p>
<b>APPLICATION NOTES</b>	<p>Western blot of immunoprecipitates performed using Normal Pig Serum (Cat. No. S100-020), Goat anti-Rabbit Light Chain HRP Conjugate (Cat. No. A120-113P) and 4-20% SDS-PAGE (link to IP-western blot protocol in Additional Info section below).</p> <p>Western blot of lysates performed using standard western blot reagents and 4-20% SDS-PAGE.</p>
<b>ADDITIONAL INFO</b>	<p><a href="https://www.bethyl.com/product/A300-261A">https://www.bethyl.com/product/A300-261A</a></p> <p>Use the link above to view SDS, a current list of citations, and other product specific information. IP-western blot protocol: <a href="https://www.bethyl.com/content/protocol_IP_WB">https://www.bethyl.com/content/protocol_IP_WB</a></p>

This document certifies that this product has met all of the quality control standards defined by Bethyl Laboratories, Inc.  
Eric McIntush, PhD | Chief Scientific Officer Date: June 24, 2019



**Detection of human SAH3 by western blot and immunoprecipitation.** *Samples:* NETN whole cell lysate (20  $\mu$ g for WB; 1 mg for IP) from HeLa cells. *Antibody:* Affinity purified rabbit anti-SA3 antibody (Cat. No. A300-261A) used at the indicated concentration for WB and 2  $\mu$ g/mg lysate for IP. *Detection:* HRP conjugated goat anti-rabbit IgG (Cat. No. A120-101P) used at 1:10,000 followed by a chemiluminescent substrate and exposure to film for 10 seconds.