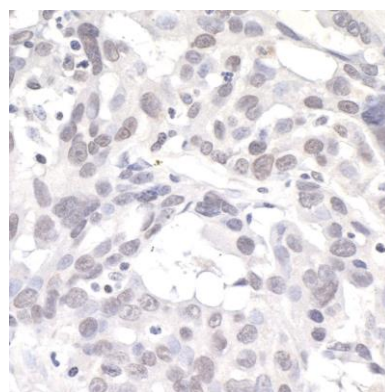


Detection of human PNK1 by western blot. *Samples:* Whole cell lysate (50 μ g) from HeLa, HEK293T, and Jurkat cells prepared using NETN lysis buffer. *Antibody:* Affinity purified rabbit anti-PNK1 antibody A300-257A (lot A300-257A-2) used for WB at 0.1 μ g/ml. *Detection:* Chemiluminescence with an exposure time of 30 seconds.



Detection of human PNK1 by immunohistochemistry. *Sample:* FFPE section of human ovarian carcinoma. *Antibody:* Affinity purified rabbit anti-PNK1 (Cat. No. A300-257A Lot2) used at a dilution of 1:1,000 (1 μ g/ml). *Detection:* DAB