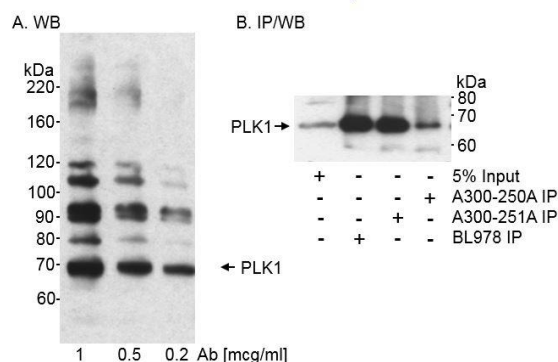


**Detection of human PLK1 by western blot.** *Samples:* Whole cell lysate (50 µg) from HeLa and mouse NIH 3T3 cells prepared using NETN lysis buffer. *Antibody:* Affinity purified rabbit anti-PLK1 antibody A300-251A (lot A300-251A-1) used for WB at 0.1 µg/ml. *Detection:* Chemiluminescence with an exposure time of 3 minutes.

**Detection of human PLK1 by immunocytochemistry.** *Sample:* Formaldehyde-fixed asynchronous HeLa cells. *Antibody:* Affinity purified rabbit anti-PLK1 (Cat. No. A300-251A Lot1) used at a dilution of 1:1,000 (1 µg/ml). *Detection:* Green fluorescent goat anti-rabbit IgG highly cross-adsorbed Antibody FITC conjugated (Cat. No. A120-501F) used at a dilution of 1:100.



**Detection of human PLK1 by western blot and immunoprecipitation.** *Samples:* Whole cell lysate (50 µg for A; 600 µg for B) from HeLa cells. *Antibodies:* A. Affinity purified rabbit anti-PLK1 antibody A300-251A used at the indicated concentrations for WB. B. Affinity purified rabbit anti-PLK1 antibodies A300-250A, A300-251A, and BL978 used at 2 µg/600 µg lysate for IP. immunoprecipitates PLK1 was detected using BL978 at 0.5 µg/ml. *Detection:* Chemiluminescence with exposure times of less than 5 minutes.