

p53 Antibody

Rabbit Polyclonal

Antigen Affinity Purified

Protein ID P04637

Catalog No. A300-249A

GeneID 7157

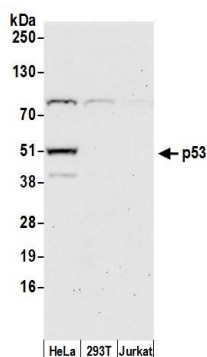
Lot No. A300-249A-2



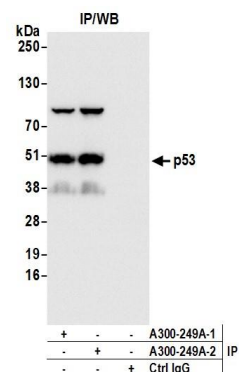
APPLICATIONS	WB, IP, IHC						
SPECIES REACTIVITY	Human						
AMOUNT	100 µl						
CONCENTRATION	1000 µg/ml						
STORAGE/SHELF LIFE	2 – 8° C / 1 year from date of receipt						
PHYSICAL STATE	Liquid						
BUFFER	Tris-citrate/phosphate buffer, pH 7 to 8 containing 0.09% Sodium Azide						
ISOTYPE	IgG						
ORIGIN	USA						
PRODUCTION PROCEDURES	<p>Antibody was affinity purified using an epitope specific to p53 immobilized on solid support.</p> <p>The epitope recognized by A300-249A maps to a region between residues 375 and the C-terminus (residue 393) of human tumor protein p53 using the numbering given in SwissProt entry P04637 (GeneID 7157).</p> <p>Immunoglobulin concentration was determined by extinction coefficient: absorbance at 280 nm of 1.4 equals 1.0 mg of IgG.</p>						
APPLICATIONS	<p>Centrifuge tube to remove product from lid. Optimal working dilutions should be determined experimentally by the investigator. Prepare working dilution immediately before use.</p> <table><tr><td>Western Blot</td><td>1:2,000 – 1:10,000</td></tr><tr><td>Immunoprecipitation</td><td>2 – 10 µg/mg lysate</td></tr><tr><td>Immunohistochemistry</td><td>1:1,000 to 1:5,000. Epitope retrieval with citrate buffer pH6.0 is recommended for FFPE tissue sections.</td></tr></table>	Western Blot	1:2,000 – 1:10,000	Immunoprecipitation	2 – 10 µg/mg lysate	Immunohistochemistry	1:1,000 to 1:5,000. Epitope retrieval with citrate buffer pH6.0 is recommended for FFPE tissue sections.
Western Blot	1:2,000 – 1:10,000						
Immunoprecipitation	2 – 10 µg/mg lysate						
Immunohistochemistry	1:1,000 to 1:5,000. Epitope retrieval with citrate buffer pH6.0 is recommended for FFPE tissue sections.						
APPLICATION NOTES	<p>Western blot of immunoprecipitates performed using Normal Pig Serum (Cat. No. S100-020), Goat anti-Rabbit Light Chain HRP Conjugate (Cat. No. A120-113P) and 4-20% SDS-PAGE (link to IP-western blot protocol in Additional Info section below).</p> <p>Western blot of lysates performed using standard western blot reagents and 4-20% SDS-PAGE.</p>						
IHC HUMAN CONTROLS	Ovarian Carcinoma, Skin Squamous Cell Carcinoma						
ADDITIONAL INFO	<p>https://www.bethyl.com/product/A300-249A</p> <p>Use the link above to view SDS, a current list of citations, and other product specific information.</p> <p>IP-western blot protocol: https://www.bethyl.com/content/protocol_IP_WB</p>						

This document certifies that this product has met all of the quality control standards defined by Bethyl Laboratories, Inc.
Eric McIntush, PhD | Chief Scientific Officer

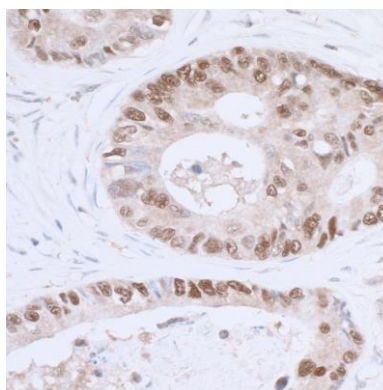
Date: June 21, 2019



Detection of human p53 by western blot. *Samples:* Whole cell lysate (50 µg) from HeLa, HEK293T, and Jurkat cells prepared using NETN lysis buffer. *Antibody:* Affinity purified rabbit anti-p53 antibody A300-249A (lot A300-249A-2) used for WB at 0.1 µg/ml. *Detection:* Chemiluminescence with an exposure time of 30 seconds.



Detection of human p53 by western blot of immunoprecipitates. *Samples:* Whole cell lysate (1.0 mg per IP reaction; 20% of IP loaded) from HEK293T cells prepared using NETN lysis buffer. *Antibodies:* Affinity purified rabbit anti-p53 antibody A300-249A (lot A300-249A-2) used for IP at 6 µg per reaction. p53 was also immunoprecipitated by a previous lot of this antibody (lot A300-249A-1). For blotting immunoprecipitated p53, A300-249A was used at 0.4 µg/ml. *Detection:* Chemiluminescence with an exposure time of 1 second.



Detection of human p53 by immunohistochemistry.

Sample: FFPE section of human ovarian carcinoma.

Antibody: Affinity purified rabbit anti-p53 (Cat. No. A300-249A lot 2) used at a dilution of 1:5,000 (0.2 µg/ml).

Detection: DAB