

RPA32 Antibody

Rabbit Polyclonal

Antigen Affinity Purified

Protein ID NP_002937.1

Catalog No. A300-244A

GeneID 6118

Lot No. A300-244A-3



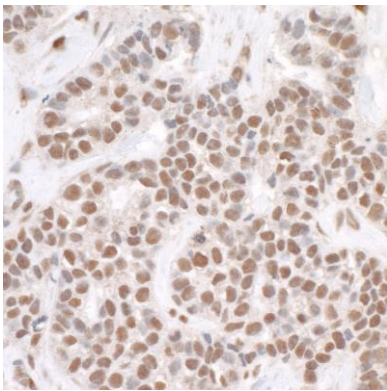
APPLICATIONS	WB, IP, IHC
SPECIES REACTIVITY	Human, Mouse
AMOUNT	100 µl
CONCENTRATION	1000 µg/ml
STORAGE/SHELF LIFE	2 – 8° C / 1 year from date of receipt
PHYSICAL STATE	Liquid
BUFFER	Tris-citrate/phosphate buffer, pH 7 to 8 containing 0.09% Sodium Azide
ISOTYPE	IgG
ORIGIN	USA
PRODUCTION PROCEDURES	<p>Antibody was affinity purified using an epitope specific to RPA32 immobilized on solid support.</p> <p>The epitope recognized by A300-244A maps to a region between residue 225 and the C-terminus (residue 270) of human Replication Protein A2 (32kD) using the numbering given in entry NP_002937.1 (GeneID 6118).</p> <p>Immunoglobulin concentration was determined by extinction coefficient: absorbance at 280 nm of 1.4 equals 1.0 mg of IgG.</p>
APPLICATIONS	<p>Centrifuge tube to remove product from lid. Optimal working dilutions should be determined experimentally by the investigator. Prepare working dilution immediately before use.</p> <p>Western Blot 1:2,000 – 1:10,000</p> <p>Immunoprecipitation 2 – 5 µg/mg lysate</p> <p>Immunohistochemistry 1:2,000 – 1:10,000. Epitope retrieval with Tris-EDTA pH 9.0 is recommended for FFPE tissue sections.</p>
APPLICATION NOTES	Western blot of immunoprecipitates performed using Normal Pig Serum (Cat. No. S100-020), Goat anti-Rabbit Light Chain HRP Conjugate (Cat. No. A120-113P) and 4-20% SDS-PAGE (link to IP-western blot protocol in Additional Info section below).
IHC HUMAN CONTROLS	Western blot of lysates performed using standard western blot reagents and 4-20% SDS-PAGE. Breast Carcinoma, Colon Carcinoma, Ovarian Carcinoma, Prostate Carcinoma, Stomach Adenocarcinoma, Testicular Seminoma
IHC MOUSE CONTROLS	Colon Carcinoma CT26, Renal Cell Carcinoma, Squamous Cell Carcinoma, Teratoma
ADDITIONAL INFO	<p>https://www.bethyl.com/product/A300-244A</p> <p>Use the link above to view SDS, a current list of citations, and other product specific information. IP-western blot protocol: https://www.bethyl.com/content/protocol_IP_WB</p>

This document certifies that this product has met all of the quality control standards defined by Bethyl Laboratories, Inc.
Eric McIntush, PhD | Chief Scientific Officer Date: June 21, 2019



Detection of human and mouse RPA32 by western blot.
Samples: Whole cell lysate (5 µg) from HeLa, HEK293T, Jurkat, mouse TCMK-1, and mouse NIH 3T3 cells prepared using NETN lysis buffer. *Antibody:* Affinity purified rabbit anti-RPA32 antibody A300-244A (lot A300-244A-3) used for WB at 0.1 µg/ml. *Detection:* Chemiluminescence with an exposure time of 10 seconds.

Detection of human RPA32 by western blot of immunoprecipitates. *Samples:* Whole cell lysate (1.0 mg per IP reaction; 20% of IP loaded) from HeLa cells treated with 100 µM etoposide for 4 hours (+) or mock treated (-). *Antibodies:* Affinity purified rabbit anti-RPA32 antibody A300-244A (lot A300-244A-3) used for IP at 3 µg per reaction. RPA32 was also immunoprecipitated by rabbit anti-Phospho RPA32 (S4/S8) recombinant monoclonal antibody [BL-165-5F1] (A700-009). For blotting immunoprecipitated Phospho RPA32 (S4/S8), A700-009 was used at 1:1000. *Detection:* Chemiluminescence with an exposure time of 3 minutes.



Detection of human RPA32 by immunohistochemistry.
Sample: FFPE section of human breast carcinoma.
Antibody: Affinity purified rabbit anti-RPA32 (Cat. No. A300-244A Lot 3) used at a dilution of 1:5,000 (0.2 µg/ml). *Detection:* DAB