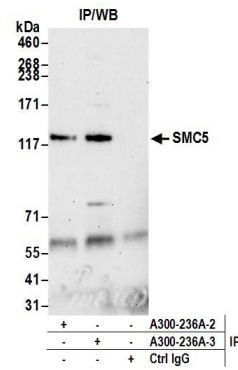


Detection of human and mouse SMC5 by western blot.

Samples: Whole cell lysate (50 µg) from HEK293T, Jurkat, RKO, and TCMK-1 cells prepared using NETN lysis buffer.

Antibody: Affinity purified rabbit anti-SMC5 antibody A300-236A (lot A300-236A-3) used for WB at 0.1 µg/ml.

Detection: Chemiluminescence with an exposure time of 3 minutes.



Detection of human SMC5 by western blot of immunoprecipitates.

Samples: Whole cell lysate (1.0 mg per IP reaction; 20% of IP loaded) from HEK293T cells prepared using NETN lysis buffer. *Antibodies:* Affinity purified rabbit anti-SMC5 antibody A300-236A (lot A300-236A-3) used for IP at 6 µg per reaction. SMC5 was also immunoprecipitated by a previous lot of this antibody (lot A300-236A-2). For blotting immunoprecipitated SMC5, A300-236A was used at 0.1 µg/ml. *Detection:* Chemiluminescence with an exposure time of 75 seconds.