

# SDS3 Antibody

Goat Polyclonal

Antigen Affinity Purified

Protein ID NP\_071936.2

Catalog No. A300-235A

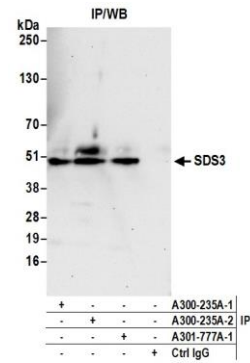
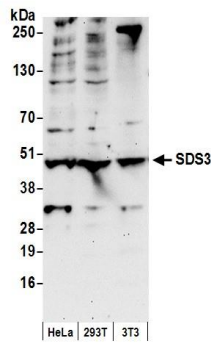
GeneID 64426

Lot No. A300-235A-2



<b>APPLICATIONS</b>	WB, IP
<b>SPECIES REACTIVITY</b>	Human, Mouse
<b>PRESUMED REACTIVITY</b>	Based on 100% sequence identity, this antibody is predicted to react with Bovine and Orangutan
<b>AMOUNT</b>	100 µl
<b>CONCENTRATION</b>	1000 µg/ml
<b>STORAGE/SHELF LIFE</b>	2 - 8° C / 1 year from date of receipt
<b>PHYSICAL STATE</b>	Liquid
<b>BUFFER</b>	Tris-citrate/phosphate buffer, pH 7 to 8 containing 0.09% Sodium Azide
<b>ISOTYPE</b>	IgG
<b>ORIGIN</b>	USA
<b>PRODUCTION PROCEDURES</b>	<p>Antibody was affinity purified using an epitope specific to SDS3 immobilized on solid support.</p> <p>The epitope recognized by A300-235A maps to a region between residues 175 and 225 of human Suppressor of Defective Silencing 3 using the numbering given in entry NP_071936.2 (GeneID 64426).</p> <p>Immunoglobulin concentration was determined by extinction coefficient: absorbance at 280 nm of 1.4 equals 1.0 mg of IgG.</p>
<b>APPLICATIONS</b>	<p>Centrifuge tube to remove product from lid. Optimal working dilutions should be determined experimentally by the investigator. Prepare working dilution immediately before use.</p> <p>Western Blot                      1:1,000 - 1:5,000</p> <p>Immunoprecipitation          2 - 10 µg/mg lysate</p>
<b>APPLICATION NOTES</b>	Western blot of lysates performed using standard western blot reagents and 4-20% SDS-PAGE.
<b>ADDITIONAL INFO</b>	<p><a href="https://www.bethyl.com/product/A300-235A">https://www.bethyl.com/product/A300-235A</a></p> <p>Use the link above to view SDS, a current list of citations, and other product specific information.</p>

This document certifies that this product has met all of the quality control standards defined by Bethyl Laboratories, Inc.  
Eric McIntush, PhD | Chief Scientific Officer Date: June 21, 2019



**Detection of human and mouse SDS3 by western blot.**  
*Samples:* Whole cell lysate (50 µg) from HeLa, HEK293T, and mouse NIH 3T3 cells prepared using NETN lysis buffer.  
*Antibody:* Affinity purified goat anti-SDS3 antibody A300-235A (lot A300-235A-2) used for WB at 0.4 µg/ml.  
*Detection:* Chemiluminescence with an exposure time of 30 seconds.

**Detection of human SDS3 by western blot of immunoprecipitates.**  
*Samples:* Whole cell lysate (0.5 or 1.0 mg per IP reaction; 20% of IP loaded) from HEK293T cells prepared using NETN lysis buffer.  
*Antibodies:* Affinity purified goat anti-SDS3 antibody A300-235A (lot A300-235A-2) used for IP at 6 µg per reaction. SDS3 was also immunoprecipitated by a previous lot of this antibody (A300-235A-1) and rabbit anti-SDS3 antibody A301-777A.  
 For blotting immunoprecipitated SDS3, A300-235A was used at 1 µg/ml.  
*Detection:* Chemiluminescence with an exposure time of 30 seconds.