

KIF14 Antibody

Rabbit Polyclonal

Antigen Affinity Purified

Protein ID NP_055690.1

Catalog No. A300-233A

GeneID 9928

Lot No. A300-233A-2



APPLICATIONS	WB, IP
SPECIES REACTIVITY	Human
AMOUNT	100 µl
CONCENTRATION	1000 µg/ml
STORAGE/SHELF LIFE	2 – 8° C / 1 year from date of receipt
PHYSICAL STATE	Liquid
BUFFER	Tris-citrate/phosphate buffer, pH 7 to 8 containing 0.09% Sodium Azide
ISOTYPE	IgG
ORIGIN	USA
PRODUCTION PROCEDURES	Antibody was affinity purified using an epitope specific to KIF14 immobilized on solid support.

The epitope recognized by A300-233A maps to a region between residues 900 and 950 of human Kinesin Family Member 14 using the numbering given in entry NP_055690.1 (GeneID 9928).

Immunoglobulin concentration was determined by extinction coefficient: absorbance at 280 nm of 1.4 equals 1.0 mg of IgG.

APPLICATIONS Centrifuge tube to remove product from lid. Optimal working dilutions should be determined experimentally by the investigator. Prepare working dilution immediately before use.

Western Blot 1:2,000 – 1:10,000

Immunoprecipitation 2 – 10 µg/mg lysate

APPLICATION NOTES Western blot of immunoprecipitates performed using Normal Pig Serum (Cat. No. S100-020), Goat anti-Rabbit Light Chain HRP Conjugate (Cat. No. A120-113P) and 4-8% SDS-PAGE (link to IP-western blot protocol in Additional Info section below).

Western blot of lysates performed using standard western blot reagents and 4-8% SDS-PAGE.

IHC HUMAN CONTROLS Colon Carcinoma, Pancreatic Islet Cell Tumor, HeLa Cells

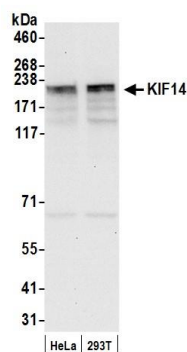
ADDITIONAL INFO <https://www.bethyl.com/product/A300-233A>

Use the link above to view SDS, a current list of citations, and other product specific information.

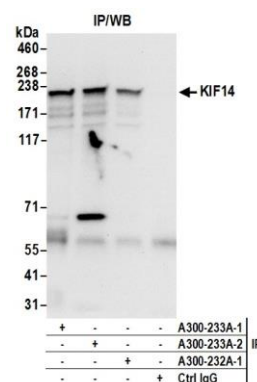
IP-western blot protocol: https://www.bethyl.com/content/protocol_IP_WB

This document certifies that this product has met all of the quality control standards defined by Bethyl Laboratories, Inc.
Eric McIntush, PhD | Chief Scientific Officer

Date: June 21, 2019



Detection of human KIF14 by western blot. *Samples:* Whole cell lysate (50 μ g) from HeLa and HEK293T cells prepared using NETN lysis buffer. *Antibody:* Affinity purified rabbit anti-KIF14 antibody A300-233A (lot A300-233A-2) used for WB at 0.1 μ g/ml. *Detection:* Chemiluminescence with an exposure time of 10 seconds.



Detection of human KIF14 by western blot of immunoprecipitates. *Samples:* Whole cell lysate (0.5 or 1.0 mg per IP reaction; 20% of IP loaded) from HeLa cells prepared using NETN lysis buffer. *Antibodies:* Affinity purified rabbit anti-KIF14 antibody A300-233A (lot A300-233A-2) used for IP at 6 μ g per reaction. KIF14 was also immunoprecipitated by a previous lot of this antibody (A300-233A-1) and rabbit anti-KIF14 antibody A300-232A. For blotting immunoprecipitated KIF14, A300-233A was used at 1 μ g/ml. *Detection:* Chemiluminescence with an exposure time of 10 seconds.