

Phospho XRCC1 (S485/T488) Antibody

Rabbit Polyclonal

Antigen Affinity Purified	Protein ID	P18887
Catalog No. A300-231A	GeneID	7515
Lot No. A300-231A-2		



APPLICATIONS	WB, IHC
SPECIES REACTIVITY	Human, Mouse
PRESUMED REACTIVITY	Based on 100% sequence identity, this antibody is predicted to react with Rat
AMOUNT	100 µl
CONCENTRATION	1000 µg/ml
STORAGE/SHELF LIFE	2 - 8° C / 1 year from date of receipt
PHYSICAL STATE	Liquid
BUFFER	Tris-citrate/phosphate buffer, pH 7 to 8 containing 0.09% Sodium Azide
ISOTYPE	IgG
ORIGIN	USA
PRODUCTION PROCEDURES	Antibody was affinity purified using an epitope specific to phosphorylation at Ser 485 and Thr 488 of XRCC1 immobilized on solid support.

The epitope recognized by A300-231A maps to a region of surrounding residues Ser 485 and Thr 488 of human X-ray Repair Complementing protein 1 using the numbering given in SwissProt entry P18887 (GeneID 7515).

Immunoglobulin concentration was determined by extinction coefficient: absorbance at 280 nm of 1.4 equals 1.0 mg of IgG.

APPLICATIONS Centrifuge tube to remove product from lid. Optimal working dilutions should be determined experimentally by the investigator. Prepare working dilution immediately before use.

Western Blot 1:1,000 - 1:5,000

Immunohistochemistry 1:2,000 - 1:10,000. Epitope retrieval with citrate buffer pH 6.0 is recommended for FFPE tissue sections.

APPLICATION NOTES Western blot of lysates performed using standard western blot reagents and 4-8% SDS-PAGE.

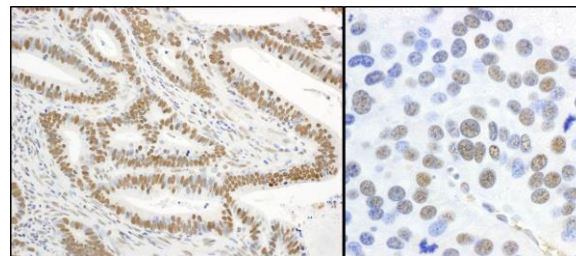
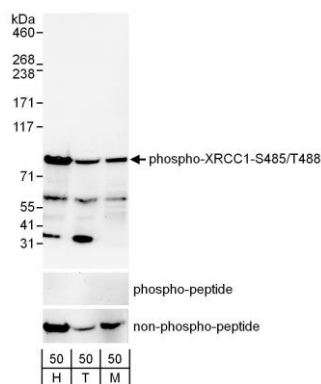
IHC HUMAN CONTROLS Breast Carcinoma, Ovarian Carcinoma, Prostate Carcinoma, Stomach Adenocarcinoma

IHC MOUSE CONTROLS Renal Cell Carcinoma

ADDITIONAL INFO <https://www.bethyl.com/product/A300-231A>

Use the link above to view SDS, a current list of citations, and other product specific information.

This document certifies that this product has met all of the quality control standards defined by Bethyl Laboratories, Inc.
Eric McIntush, PhD | Chief Scientific Officer Date: June 21, 2019



Detection of human and mouse Phospho-XRCC1-S485/T488 by western blot. *Samples:* Whole cell lysate (50 µg) from asynchronously growing HeLa (H), HEK293T (T) and mouse NIH-3T3 (M) cells. *Antibodies:* Affinity purified rabbit anti-Phospho-XRCC1-S485/T488 antibody A300-231A (lot A300-231A-2) used for WB at 0.1 µg/ml. The binding of the antibody was blocked by pre-incubation with the phospho-peptide but was not blocked by pre-incubation with the non-phosphorylated peptide. *Detection:* Chemiluminescence with an exposure time of 30 seconds.

Detection of human and mouse Phospho-XRCC1-S485/T488 by immunohistochemistry. *Sample:* FFPE sections of human stomach carcinoma (left) and mouse renal cell carcinoma (right). *Antibody:* Affinity purified rabbit anti- Phospho-XRCC1-S485/T488 (Cat. No. A300-231A Lot2) used at a dilution of 1:5,000 (0.2µg/ml). *Detection:* DAB