

Cul7 Antibody

Rabbit Polyclonal

Antigen Affinity Purified

Protein ID Q14999

Catalog No. A300-224A

GeneID 9820

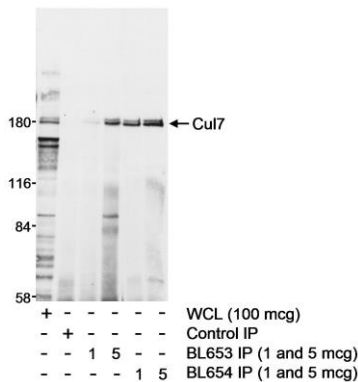
Lot No. A300-224A-2



APPLICATIONS	IP
SPECIES REACTIVITY	Human
PRESUMED REACTIVITY	Based on 100% sequence identity, this antibody is predicted to react with Rat
AMOUNT	100 µl
CONCENTRATION	1000 µg/ml
STORAGE/SHELF LIFE	2 – 8° C / 1 year from date of receipt
PHYSICAL STATE	Liquid
BUFFER	Tris-citrate/phosphate buffer, pH 7 to 8 containing 0.09% Sodium Azide
ISOTYPE	IgG
ORIGIN	USA
PRODUCTION PROCEDURES	<p>Antibody was affinity purified using an epitope specific to Cul7 immobilized on solid support.</p> <p>The epitope recognized by A300-224A maps to a region between residues 1650 and the C-terminus (residue 1698) of human Cullin homolog 7 using the numbering given in SwissProt entry Q14999 (GeneID 9820).</p> <p>Immunoglobulin concentration was determined by extinction coefficient: absorbance at 280 nm of 1.4 equals 1.0 mg of IgG.</p>
APPLICATIONS	<p>Centrifuge tube to remove product from lid. Optimal working dilutions should be determined experimentally by the investigator. Prepare working dilution immediately before use.</p> <p>Western Blot Not recommended. Use rabbit anti-Cul7 antibody A300-223A.</p> <p>Immunoprecipitation 2 – 5 µg/mg lysate</p>
APPLICATION NOTES	Western blot of immunoprecipitates performed using Normal Pig Serum (Cat. No. S100-020), Goat anti-Rabbit Light Chain HRP Conjugate (Cat. No. A120-113P) and 4-8% SDS-PAGE (link to IP-western blot protocol in Additional Info section below).
ADDITIONAL INFO	<p>https://www.bethyl.com/product/A300-224A</p> <p>Use the link above to view SDS, a current list of citations, and other product specific information.</p> <p>IP-western blot protocol: https://www.bethyl.com/content/protocol_IP_WB</p>

This document certifies that this product has met all of the quality control standards defined by Bethyl Laboratories, Inc.
Eric McIntush, PhD | Chief Scientific Officer

Date: June 21, 2019



Detection of human Cul7 by western blot and immunoprecipitation. *Samples:* Whole cell lysate (1 mg for IP) from U2OS cells. *Antibodies:* Affinity purified rabbit anti-Cul7 antibody BL654 (Cat. No. A300-224A) at 1 and 5 µg/mg lysate for IP. Cul-7 was also immunoprecipitated using rabbit anti-Cul7 antibody BL653 (Cat. No. A300-223A). Cul7 was detected by WB using BL653 at 1 µg/ml. immunoprecipitation was also performed using normal rabbit IgG (control IP) *Detection:* Chemiluminescence with exposure times of 10 seconds.