

Matriptase/ST14 Antibody

Rabbit Polyclonal

Antigen Affinity Purified

Protein ID Q9Y5Y6

Catalog No. A300-221A

GeneID 6768

Lot No. A300-221A-2



APPLICATIONS	WB, IP
SPECIES REACTIVITY	Human
AMOUNT	100 µl
CONCENTRATION	1000 µg/ml
STORAGE/SHELF LIFE	2 - 8° C / 1 year from date of receipt
PHYSICAL STATE	Liquid
BUFFER	Tris-citrate/phosphate buffer, pH 7 to 8 containing 0.09% Sodium Azide
ISOTYPE	IgG
ORIGIN	USA
PRODUCTION PROCEDURES	Antibody was affinity purified using an epitope specific to Matriptase/ST14 immobilized on solid support.

The epitope recognized by A300-221A maps to a region between residues 800 and the C-terminus (residue 855) of human Membrane-type serine protease 1 using the numbering given in SwissProt entry Q9Y5Y6 (GeneID 6768).

Immunoglobulin concentration was determined by extinction coefficient: absorbance at 280 nm of 1.4 equals 1.0 mg of IgG.

APPLICATIONS Centrifuge tube to remove product from lid. Optimal working dilutions should be determined experimentally by the investigator. Prepare working dilution immediately before use.

Western Blot 1:2,000 - 1:10,000

Immunoprecipitation 2 - 10 µg/mg lysate

APPLICATION NOTES Western blot of immunoprecipitates performed using Normal Pig Serum (Cat. No. S100-020), Goat anti-Rabbit Light Chain HRP Conjugate (Cat. No. A120-113P) and 4-8% SDS-PAGE (link to IP-western blot protocol in Additional Info section below).

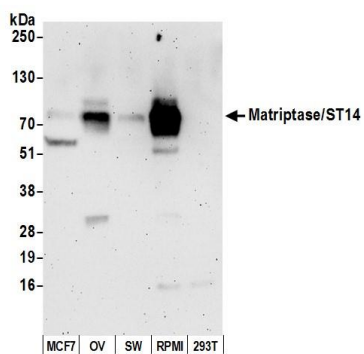
Western blot of lysates performed using standard western blot reagents and 4-8% SDS-PAGE.

ADDITIONAL INFO <https://www.bethyl.com/product/A300-221A>

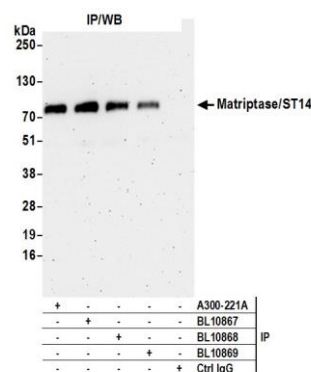
Use the link above to view SDS, a current list of citations, and other product specific information.

IP-western blot protocol: https://www.bethyl.com/content/protocol_IP_WB

This document certifies that this product has met all of the quality control standards defined by Bethyl Laboratories, Inc.
Eric McIntush, PhD | Chief Scientific Officer Date: June 21, 2019



Detection of human Matriptase/ST14 by western blot.
Samples: Whole cell lysate (50 µg) from MCF-7, OVCAR-4 [OV], SW620 [SW], RPMI-8266 [RPMI], and HEK293T cells prepared using NETN lysis buffer. *Antibody:* Affinity purified rabbit anti-Matriptase/ST14 antibody A300-221A (lot A300-221A-2) used for WB at 0.1 µg/ml. *Detection:* Chemiluminescence with an exposure time of 3 minutes.



Detection of human Matriptase/ST14 by western blot of immunoprecipitates. *Samples:* Whole cell lysate (0.5 or 1.0 mg per IP reaction; 20% of IP loaded) from MCF-7 cells prepared using NETN lysis buffer. *Antibodies:* Affinity purified rabbit anti-Matriptase/ST14 antibody A300-221A (lot A300-221A-2) used for IP at 6 µg per reaction. Matriptase/ST14 was also immunoprecipitated by Rabbit anti-Matriptase/ST14 antibodies BL10867, BL10868 and BL10869. For blotting immunoprecipitated Matriptase/ST14, A300-221A was used at 1 µg/ml. *Detection:* Chemiluminescence with an exposure time of 3 minutes.