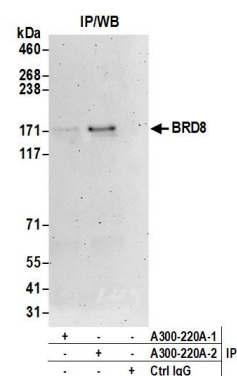
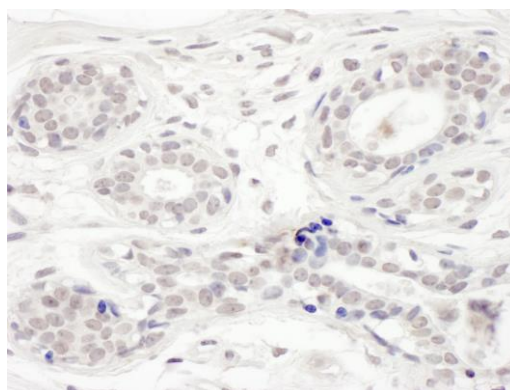


Detection of human BRD8 by western blot. *Samples:* Nuclear extract (50 μ g) from HeLa and HEK293T cells. *Antibodies:* Affinity purified rabbit anti-BRD8 antibody A300-220A (lot A300-220A-2) used for WB at 0.1 μ g/ml. *Detection:* Chemiluminescence with an exposure time of 3 minutes.



Detection of human BRD8 by western blot of immunoprecipitates. *Samples:* Nuclear extract (0.5 or 1 mg per IP reaction; 20% of IP loaded) from HeLa cells. *Antibodies:* Affinity purified rabbit anti-BRD8 antibody A300-220A (lot A300-220A-2) used for IP at 6 μ g per reaction. BRD8 was also immunoprecipitated by a previous lot of this antibody (lot A300-220A-1). For blotting immunoprecipitated BRD8, A300-220A-2 was used at 1 μ g/ml. *Detection:* Chemiluminescence with an exposure time of 3 minutes.



Detection of human BRD8 by immunohistochemistry. *Sample:* FFPE section of human breast carcinoma. *Antibody:* Affinity purified rabbit anti-BRD8 (Cat. No. A300-220A Lot2) used at a dilution of 1:1,000 (1 μ g/ml). *Detection:* DAB