

BHC110/LSD1 Antibody

Rabbit Polyclonal

Antigen Affinity Purified

Protein ID O60341

Catalog No. A300-216A

GeneID 23028

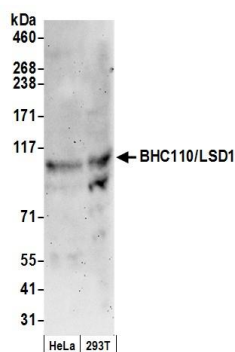
Lot No. A300-216A-1



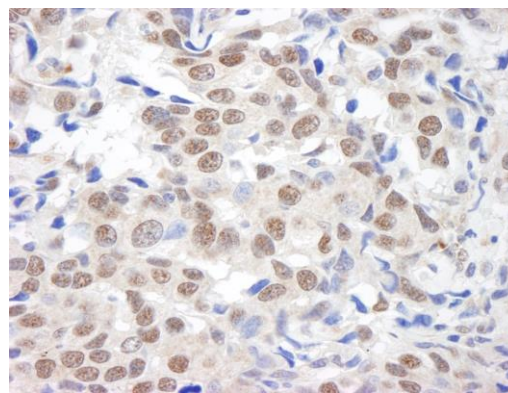
APPLICATIONS	WB, IHC
SPECIES REACTIVITY	Human
PRESUMED REACTIVITY	Based on 100% sequence identity, this antibody is predicted to react with Mouse
AMOUNT	100 µl
CONCENTRATION	1000 µg/ml
STORAGE/SHELF LIFE	2 – 8° C / 1 year from date of receipt
PHYSICAL STATE	Liquid
BUFFER	Tris-citrate/phosphate buffer, pH 7 to 8 containing 0.09% Sodium Azide
ISOTYPE	IgG
ORIGIN	USA
PRODUCTION PROCEDURES	<p>Antibody was affinity purified using an epitope specific to BHC110/LSD1 immobilized on solid support.</p> <p>The epitope recognized by A300-216A maps to a region between residues 825 and the C-terminus (residue 886) of human FAD-binding protein BRAF35-HDAC complex 110 kDa (lysine-specific histone demethylase 1) using the numbering given in TrEMBL entry O60341 (GeneID 23028).</p> <p>Immunoglobulin concentration was determined by extinction coefficient: absorbance at 280 nm of 1.4 equals 1.0 mg of IgG.</p>
APPLICATIONS	<p>Centrifuge tube to remove product from lid. Optimal working dilutions should be determined experimentally by the investigator. Prepare working dilution immediately before use.</p> <p>Western Blot 1:5,000 – 1:15,000</p> <p>Immunohistochemistry 1:500 – 1:2,000. Epitope retrieval with citrate buffer pH 6.0 is recommended for FFPE tissue sections.</p>
APPLICATION NOTES	Western blot of lysates performed using standard western blot reagents and 4–8% SDS-PAGE.
IHC HUMAN CONTROLS	Breast Carcinoma, Non-Small Cell Lung Cancer, Prostate Carcinoma, Skin Basal Cell Carcinoma
ADDITIONAL INFO	<p>https://www.bethyl.com/product/A300-216A</p> <p>Use the link above to view SDS, a current list of citations, and other product specific information.</p>

This document certifies that this product has met all of the quality control standards defined by Bethyl Laboratories, Inc.
Eric McIntush, PhD | Chief Scientific Officer

Date: June 21, 2019

**Detection of human BHC110/LSD1 by western blot.**

Samples: Whole cell lysate (50 µg) from HeLa and HEK293T cells prepared using NETN lysis buffer. *Antibody:* Affinity purified rabbit anti-BHC110/LSD1 antibody A300-216A (lot A300-216A-1) used for WB at 0.06 µg/ml. *Detection:* Chemiluminescence with an exposure time of 3 minutes.

**Detection of human BHC110/LSD1 by immunohistochemistry.**

Sample: FFPE section of human breast carcinoma. *Antibody:* Affinity purified rabbit anti-BHC110/LSD1 (Cat. No. A300-216A) used at a dilution of 1:1,000 (1 µg/ml). *Detection:* DAB