

FANCI Antibody

Rabbit Polyclonal

Antigen Affinity Purified

Protein ID Q9NV11

Catalog No. A300-212A

GeneID 55215

Lot No. A300-212A-1



APPLICATIONS	WB, IP
SPECIES REACTIVITY	Human
AMOUNT	100 µl
CONCENTRATION	1000 µg/ml
STORAGE/SHELF LIFE	2 - 8° C / 1 year from date of receipt
PHYSICAL STATE	Liquid
BUFFER	Tris-citrate/phosphate buffer, pH 7 to 8 containing 0.09% Sodium Azide
ISOTYPE	IgG
ORIGIN	USA
PRODUCTION PROCEDURES	Antibody was affinity purified using an epitope specific to FANCI immobilized on solid support.

The epitope recognized by A300-212A maps to a region between residues 200 and 250 of human Fanconi anemia (FA) complementation group I using the numbering given in TrEMBL entry Q9NV11 (GeneID 55215).

Immunoglobulin concentration was determined by extinction coefficient: absorbance at 280 nm of 1.4 equals 1.0 mg of IgG.

APPLICATIONS Centrifuge tube to remove product from lid. Optimal working dilutions should be determined experimentally by the investigator. Prepare working dilution immediately before use.

Western Blot 1:2,500 - 1:10,000

Immunoprecipitation 1 - 4 µg/mg lysate

APPLICATION NOTES Western blot of immunoprecipitates performed using Normal Pig Serum (Cat. No. S100-020), Goat anti-Rabbit Light Chain HRP Conjugate (Cat. No. A120-113P) and 4-8% SDS-PAGE (link to IP-western blot protocol in Additional Info section below).

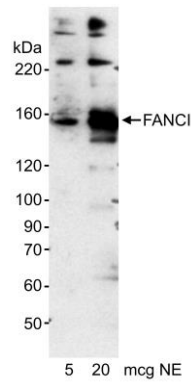
Western blot of lysates performed using standard western blot reagents and 4-8% SDS-PAGE.

ADDITIONAL INFO <https://www.bethyl.com/product/A300-212A>

Use the link above to view SDS, a current list of citations, and other product specific information.

IP-western blot protocol: https://www.bethyl.com/content/protocol_IP_WB

This document certifies that this product has met all of the quality control standards defined by Bethyl Laboratories, Inc.
Eric McIntush, PhD | Chief Scientific Officer Date: June 21, 2019



Detection of human FANCI by western blot. *Samples:* Nuclear extract (5 and 20 μ g) from HeLa cells. *Antibody:* Affinity purified rabbit anti-FANCI antibody (Cat. No. A300-212A) used at 0.2 μ g/ml. *Detection:* Chemiluminescence with an exposure time of 15 minutes.