

Pumilio 1 Antibody

Goat Polyclonal

Antigen Affinity Purified

Protein ID NP_055491.1

Catalog No. A300-201A

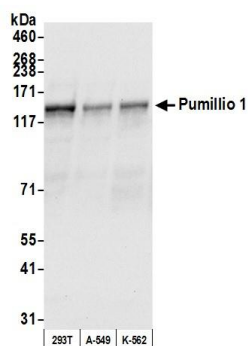
GeneID 9698

Lot No. A300-201A-3

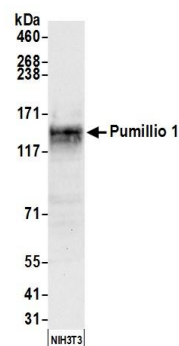


APPLICATIONS	WB, IP
SPECIES REACTIVITY	Human, Mouse
PRESUMED REACTIVITY	Based on 100% sequence identity, this antibody is predicted to react with Orangutan
AMOUNT	100 µl
CONCENTRATION	1000 µg/ml
STORAGE/SHELF LIFE	2 - 8° C / 1 year from date of receipt
PHYSICAL STATE	Liquid
BUFFER	Tris-citrate/phosphate buffer, pH 7 to 8 containing 0.09% Sodium Azide
ISOTYPE	IgG
ORIGIN	USA
PRODUCTION PROCEDURES	<p>Antibody was affinity purified using an epitope specific to Pumilio immobilized on solid support.</p> <p>The epitope recognized by A300-201A maps to a region between residues 225 and 275 of human Pumilio 1 using the numbering given in entry NP_055491.1 (GeneID 9698).</p> <p>Immunoglobulin concentration was determined by extinction coefficient: absorbance at 280 nm of 1.4 equals 1.0 mg of IgG.</p>
APPLICATIONS	<p>Centrifuge tube to remove product from lid. Optimal working dilutions should be determined experimentally by the investigator. Prepare working dilution immediately before use.</p> <p>Western Blot 1:2,000 - 1:10,000</p> <p>Immunoprecipitation 2 - 10 µg/mg lysate</p>
APPLICATION NOTES	Western blot of lysates performed using standard western blot reagents and 4-8% SDS-PAGE.
ADDITIONAL INFO	<p>https://www.bethyl.com/product/A300-201A</p> <p>Use the link above to view SDS, a current list of citations, and other product specific information.</p>

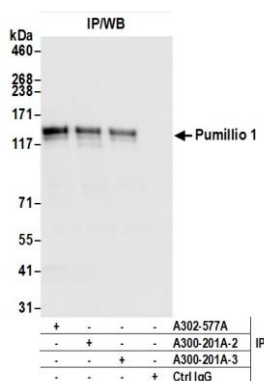
This document certifies that this product has met all of the quality control standards defined by Bethyl Laboratories, Inc.
Eric McIntush, PhD | Chief Scientific Officer Date: June 21, 2019



Detection of human Pumilio 1 by western blot. *Samples:* Whole cell lysate (50 µg) from HEK293T, A-549, and K-562 cells prepared using NETN lysis buffer. *Antibody:* Affinity purified goat anti-Pumillio 1 antibody A300-201A (lot A300-201A-3) used for WB at 0.1 µg/ml. *Secondary:* HRP-conjugated rabbit anti-goat IgG (A50-100P). Chemiluminescence with an exposure time of 10 seconds.



Detection of mouse Pumilio 1 by western blot. *Samples:* Whole cell lysate (50 µg) from NIH 3T3 cells prepared using NETN lysis buffer. *Antibody:* Affinity purified goat anti-Pumillio 1 antibody A300-201A (lot A300-201A-3) used for WB at 0.1 µg/ml. *Secondary:* HRP-conjugated rabbit anti-goat IgG (A50-100P). Chemiluminescence with an exposure time of 10 seconds.



Detection of human Pumilio 1 by western blot of immunoprecipitates. *Samples:* Whole cell lysate (1.0 mg per IP reaction; 20% of IP loaded) from HEK293T cells prepared using NETN lysis buffer. *Antibodies:* Affinity purified goat anti-Pumillio 1 antibody A300-201A (lot A300-201A-3) used for IP at 6 µg per reaction. Pumillio 1 was also immunoprecipitated by a previous lot of this antibody (lot A300-201A-2) and rabbit anti-Pumillio 1 antibody A302-577A. For blotting immunoprecipitated Pumillio 1, A300-201A was used at 0.1 µg/ml. Chemiluminescence with an exposure time of 3 seconds.