

CKII alpha Antibody

Rabbit Polyclonal

Antigen Affinity Purified

Protein ID NP_001886.1

Catalog No. A300-196A

GeneID 1457

Lot No. A300-196A-1



APPLICATIONS	WB
SPECIES REACTIVITY	Human
PRESUMED REACTIVITY	Based on 100% sequence identity, this antibody is predicted to react with Mouse, Rat, Chicken and Bovine
AMOUNT	100 µl
CONCENTRATION	1000 µg/ml
STORAGE/SHELF LIFE	2 - 8° C / 1 year from date of receipt
PHYSICAL STATE	Liquid
BUFFER	Tris-citrate/phosphate buffer, pH 7 to 8 containing 0.09% Sodium Azide
ISOTYPE	IgG
ORIGIN	USA
PRODUCTION PROCEDURES	Antibody was affinity purified using an epitope specific to CKII alpha immobilized on solid support.

The epitope recognized by A300-196A maps to a region between residues 1 and 50 of human Casein Kinase 2, alpha 1 using the numbering given in entry NP_001886.1 (GeneID 1457).

Immunoglobulin concentration was determined by extinction coefficient: absorbance at 280 nm of 1.4 equals 1.0 mg of IgG.

APPLICATIONS Centrifuge tube to remove product from lid. Optimal working dilutions should be determined experimentally by the investigator. Prepare working dilution immediately before use.

Western Blot 1:1,000 - 1:5,000

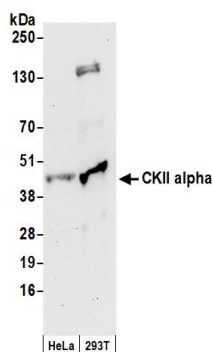
Immunoprecipitation Not recommended. Use rabbit anti-CKII alpha antibody A300-198A.

APPLICATION NOTES Western blot of lysates performed using standard western blot reagents and 4-20% SDS-PAGE.

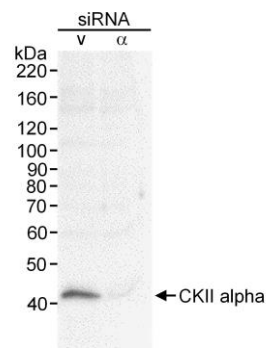
ADDITIONAL INFO <https://www.bethyl.com/product/A300-196A>

Use the link above to view SDS, a current list of citations, and other product specific information.

This document certifies that this product has met all of the quality control standards defined by Bethyl Laboratories, Inc.
Eric McIntush, PhD | Chief Scientific Officer Date: June 21, 2019



Detection of human CKII alpha by western blot. Samples: Whole cell lysate (50 μ g) from HeLa and HEK293T cells prepared using NETN lysis buffer. **Antibody:** Affinity purified rabbit anti-CKII alpha antibody A300-196A (lot A300-196A-1) used for WB at 0.2 μ g/ml. **Detection:** Chemiluminescence with an exposure time of 30 seconds.



Detection of human CKII Alpha by western blot. Sample: RIPA extract (30 μ g) from HeLa cells treated with CKII alpha siRNA or vimentin siRNA (v). **Antibody:** Affinity purified rabbit anti-CKII alpha (Cat. No. A300-196A) used at 0.33 μ g/ml. **Detection:** Chemiluminescence with a 1 minute exposure.