

# MCM5 Antibody

Rabbit Polyclonal

Antigen Affinity Purified

Protein ID NP\_006730.2

Catalog No. A300-195A

GeneID 4174

Lot No. A300-195A-2



<b>APPLICATIONS</b>	WB, IP, IHC
<b>SPECIES REACTIVITY</b>	Human, Mouse
<b>AMOUNT</b>	100 µl
<b>CONCENTRATION</b>	1000 µg/ml
<b>STORAGE/SHELF LIFE</b>	2 – 8° C / 1 year from date of receipt
<b>PHYSICAL STATE</b>	Liquid
<b>BUFFER</b>	Tris-citrate/phosphate buffer, pH 7 to 8 containing 0.09% Sodium Azide
<b>ISOTYPE</b>	IgG
<b>ORIGIN</b>	USA
<b>PRODUCTION PROCEDURES</b>	Antibody was affinity purified using an epitope specific to MCM5 immobilized on solid support.

The epitope recognized by A300-195A maps to a region between residues 1 and 50 of human Minichromosome Maintenance 5 using the numbering given in entry NP\_006730.2 (GeneID 4174).

Immunoglobulin concentration was determined by extinction coefficient: absorbance at 280 nm of 1.4 equals 1.0 mg of IgG.

**APPLICATIONS** Centrifuge tube to remove product from lid. Optimal working dilutions should be determined experimentally by the investigator. Prepare working dilution immediately before use.

Western Blot 1:5,000 – 1:20,000

Immunoprecipitation 2 – 4 µg/mg lysate. This antibody is efficient at pulling down the MCM2-7 complex.

Immunohistochemistry 1:500 – 1:2,000. Epitope retrieval with citrate buffer pH 6.0 is recommended for FFPE tissue sections.

**APPLICATION NOTES** Western blot of immunoprecipitates performed using Normal Pig Serum (Cat. No. S100-020), Goat anti-Rabbit Light Chain HRP Conjugate (Cat. No. A120-113P) and 4-8% SDS-PAGE (link to IP-western blot protocol in Additional Info section below).

Western blot of lysates performed using standard western blot reagents and 4-8% SDS-PAGE.

**IHC HUMAN CONTROLS** Breast Carcinoma, Ovarian Carcinoma, Testicular Seminoma

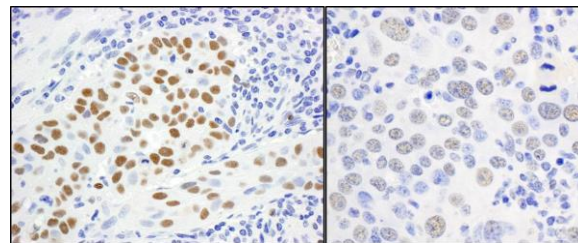
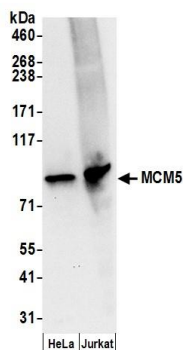
**IHC MOUSE CONTROLS** Renal Cell Carcinoma, Teratoma

**ADDITIONAL INFO** <https://www.bethyl.com/product/A300-195A>

Use the link above to view SDS, a current list of citations, and other product specific information.

IP-western blot protocol: [https://www.bethyl.com/content/protocol\\_IP\\_WB](https://www.bethyl.com/content/protocol_IP_WB)

This document certifies that this product has met all of the quality control standards defined by Bethyl Laboratories, Inc.  
Eric McIntush, PhD | Chief Scientific Officer Date: June 21, 2019



**Detection of human MCM5 by western blot.** *Samples:* Whole cell lysate (50  $\mu$ g) from HeLa and Jurkat cells prepared using NETN lysis buffer. *Antibody:* Affinity purified rabbit anti-MCM5 antibody A300-195A (lot A300-195A-2) used for WB at 0.05  $\mu$ g/ml. *Detection:* Chemiluminescence with an exposure time of 10 seconds.

**Detection of human and mouse MCM5 by immunohistochemistry.** *Sample:* FFPE sections of human lung carcinoma (left) and mouse renal cell carcinoma (right). *Antibody:* Affinity purified rabbit anti-MCM5 (Cat. No. A300-195A Lot2) used at a dilution of 1:1,000 (1  $\mu$ g/ml). *Detection:* DAB