

MCM4 Antibody

Rabbit Polyclonal

Antigen Affinity Purified

Protein ID NP_005905.2

Catalog No. A300-193A

GeneID 4173

Lot No. A300-193A-2



APPLICATIONS	WB, IHC
SPECIES REACTIVITY	Human, Mouse
AMOUNT	100 µl
CONCENTRATION	1000 µg/ml
STORAGE/SHELF LIFE	2 - 8° C / 1 year from date of receipt
PHYSICAL STATE	Liquid
BUFFER	Tris-citrate/phosphate buffer, pH 7 to 8 containing 0.09% Sodium Azide
ISOTYPE	IgG
ORIGIN	USA
PRODUCTION PROCEDURES	Antibody was affinity purified using an epitope specific to MCM4 immobilized on solid support.

The epitope recognized by A300-193A maps to a region between residues 750 and 800 of human Minichromosome Maintenance 4 using the numbering given in entry NP_005905.2 (GeneID 4173).

Immunoglobulin concentration was determined by extinction coefficient: absorbance at 280 nm of 1.4 equals 1.0 mg of IgG.

APPLICATIONS Centrifuge tube to remove product from lid. Optimal working dilutions should be determined experimentally by the investigator. Prepare working dilution immediately before use.

Western Blot 1:2,000 - 1:10,000

Immunoprecipitation Not recommended. Use rabbit anti-MCM4 antibody A300-191A or A300-195A.

Immunohistochemistry 1:500 - 1:2,000. Epitope retrieval with citrate buffer pH 6.0 is recommended for FFPE tissue sections.

APPLICATION NOTES Western blot of lysates performed using standard western blot reagents and 4-8% SDS-PAGE.

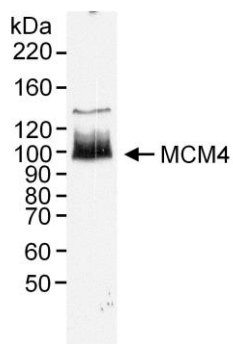
IHC HUMAN CONTROLS Ovarian Carcinoma, Small Cell Lung Cancer, Testicular Seminoma

IHC MOUSE CONTROLS Squamous Cell Carcinoma

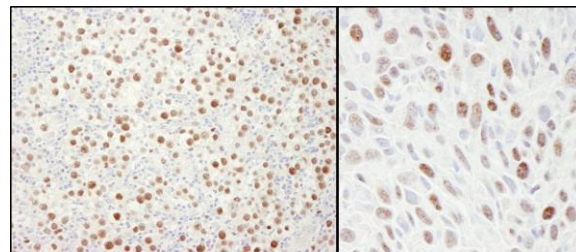
ADDITIONAL INFO <https://www.bethyl.com/product/A300-193A>

Use the link above to view SDS, a current list of citations, and other product specific information.

This document certifies that this product has met all of the quality control standards defined by Bethyl Laboratories, Inc.
Eric McIntush, PhD | Chief Scientific Officer Date: June 21, 2019



Detection of human MCM4 by western blot. *Sample:* RIPA extract (50 μ g) from HeLa cells. *Antibody:* Affinity purified rabbit anti-MCM4 (Cat. No. A300-193A) used at 0.2 μ g/ml. *Detection:* Chemiluminescence.



Detection of human and mouse MCM4 by immunohistochemistry. *Sample:* FFPE section of human testicular seminoma (left) and mouse squamous cell carcinoma (right). *Antibody:* Affinity purified rabbit anti-MCM4 (Cat. No. A300-193A Lot2) used at a dilution of 1:1,000 (1 μ g/ml). *Detection:* DAB