

Rad50 Antibody

Rabbit Polyclonal

Antigen Affinity Purified

Protein ID NP_005723.2

Catalog No. A300-185A

GeneID 10111

Lot No. A300-185A-1



| | |
|------------------------------|--|
| APPLICATIONS | WB, IHC |
| SPECIES REACTIVITY | Human |
| PRESUMED REACTIVITY | Based on 100% sequence identity, this antibody is predicted to react with Bovine, Dog, Rabbit, Orangutan, Monkey, Gorilla and Chimpanzee |
| AMOUNT | 100 µl |
| CONCENTRATION | 1000 µg/ml |
| STORAGE/SHELF LIFE | 2 - 8° C / 1 year from date of receipt |
| PHYSICAL STATE | Liquid |
| BUFFER | Tris-citrate/phosphate buffer, pH 7 to 8 containing 0.09% Sodium Azide |
| ISOTYPE | IgG |
| ORIGIN | USA |
| PRODUCTION PROCEDURES | Antibody was affinity purified using an epitope specific to Rad50 immobilized on solid support. |

The epitope recognized by A300-185A maps to a region between residues 700 and 750 of human Rad50 using the numbering given in entry NP_005723.2 (GeneID 10111).

Immunoglobulin concentration was determined by extinction coefficient: absorbance at 280 nm of 1.4 equals 1.0 mg of IgG.

APPLICATIONS Centrifuge tube to remove product from lid. Optimal working dilutions should be determined experimentally by the investigator. Prepare working dilution immediately before use.

Western Blot 1:1,000 – 1:5,000

Immunohistochemistry 1:500 – 1:2,000. Epitope retrieval with citrate buffer pH 6.0 is recommended for FFPE tissue sections.

APPLICATION NOTES Western blot of immunoprecipitates performed using Normal Pig Serum (Cat. No. S100-020), Goat anti-Rabbit Light Chain HRP Conjugate (Cat. No. A120-113P) and 4-8% SDS-PAGE (link to IP-western blot protocol in Additional Info section below).

Western blot of lysates performed using standard western blot reagents and 4-8% SDS-PAGE.

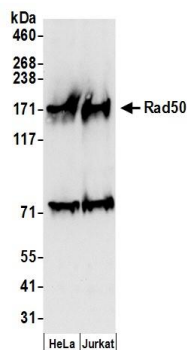
IHC HUMAN CONTROLS Laryngeal Squamous Cell Carcinoma, Ovarian Carcinoma, Pancreatic Islet Cell Tumor, Prostate Carcinoma, Skin Basal Cell Carcinoma

ADDITIONAL INFO <https://www.bethyl.com/product/A300-185A>

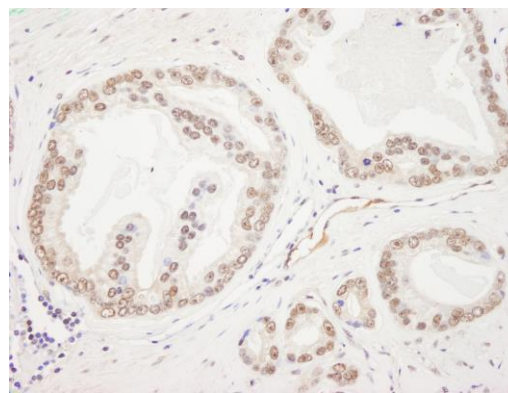
Use the link above to view SDS, a current list of citations, and other product specific information.

IP-western blot protocol: https://www.bethyl.com/content/protocol_IP_WB

This document certifies that this product has met all of the quality control standards defined by Bethyl Laboratories, Inc.
Eric McIntush, PhD | Chief Scientific Officer Date: June 21, 2019



Detection of human Rad50 by western blot. *Samples:* Whole cell lysate (50 μ g) from HeLa and Jurkat cells prepared using NETN lysis buffer. *Antibody:* Affinity purified rabbit anti-Rad50 antibody A300-185A (lot A300-185A-1) used for WB at 0.2 μ g/ml. *Detection:* Chemiluminescence with an exposure time of 3 seconds.



Detection of human Rad50 by immunohistochemistry. *Sample:* FFPE section of human prostate carcinoma. *Antibody:* Affinity purified rabbit anti-Rad50 (Cat. No. A300-185A Lot1) used at a dilution of 1:1,000 (1 μ g/ml). *Detection:* DAB