

Rad50 Antibody

Rabbit Polyclonal

Antigen Affinity Purified

Protein ID NP_005723.2

Catalog No. A300-184A

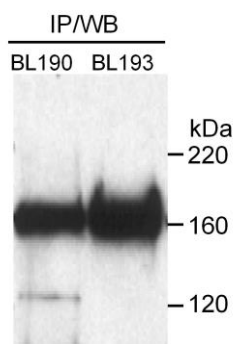
GeneID 10111

Lot No. A300-184A-1



APPLICATIONS	WB, IP
SPECIES REACTIVITY	Human
PRESUMED REACTIVITY	Based on 100% sequence identity, this antibody is predicted to react with Mouse and Rat
AMOUNT	100 µl
CONCENTRATION	1000 µg/ml
STORAGE/SHELF LIFE	2 - 8° C / 1 year from date of receipt
PHYSICAL STATE	Liquid
BUFFER	Tris-citrate/phosphate buffer, pH 7 to 8 containing 0.09% Sodium Azide
ISOTYPE	IgG
ORIGIN	USA
PRODUCTION PROCEDURES	<p>Antibody was affinity purified using an epitope specific to Rad50 immobilized on solid support.</p> <p>The epitope recognized by A300-184A maps to a region between residues 50 and 100 of human Rad50 using the numbering given in entry NP_005723.2 (GeneID 10111).</p> <p>Immunoglobulin concentration was determined by extinction coefficient: absorbance at 280 nm of 1.4 equals 1.0 mg of IgG.</p>
APPLICATIONS	<p>Centrifuge tube to remove product from lid. Optimal working dilutions should be determined experimentally by the investigator. Prepare working dilution immediately before use.</p> <p>Western Blot 1:1,000 - 1:5,000</p> <p>Immunoprecipitation 1 - 4 µg/mg lysate</p>
APPLICATION NOTES	<p>Western blot of immunoprecipitates performed using Normal Pig Serum (Cat. No. S100-020), Goat anti-Rabbit Light Chain HRP Conjugate (Cat. No. A120-113P) and 4-8% SDS-PAGE (link to IP-western blot protocol in Additional Info section below).</p> <p>Western blot of lysates performed using standard western blot reagents and 4-8% SDS-PAGE.</p>
ADDITIONAL INFO	<p>https://www.bethyl.com/product/A300-184A</p> <p>Use the link above to view SDS, a current list of citations, and other product specific information.</p> <p>IP-western blot protocol: https://www.bethyl.com/content/protocol_IP_WB</p>

This document certifies that this product has met all of the quality control standards defined by Bethyl Laboratories, Inc.
Eric McIntush, PhD | Chief Scientific Officer Date: June 21, 2019



Detection of human Rad50 by immunoprecipitation and western blot. *Sample:* Nuclear extract (1 mg) from HeLa cells. *Antibodies:* Affinity purified rabbit anti-Rad50 (Cat. No. A300-184A) used at 0.25 $\mu\text{g}/\text{ml}$ for WB of Rad50 immunoprecipitated by 1.25 μg of affinity purified rabbit anti-Rad50 (BL190) or affinity purified rabbit anti-Rad50 (BL193; Cat. No. A300-185A). *Detection:* Chemiluminescence.