

QKI Antibody

Rabbit Polyclonal

Antigen Affinity Purified Protein ID AAH19917.1

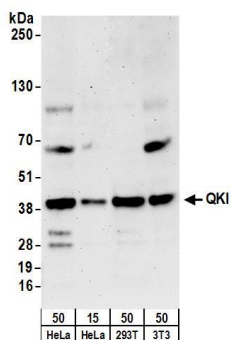
Catalog No. A300-183A GeneID 9444

Lot No. A300-183A-2



APPLICATIONS	WB, IP, IHC
SPECIES REACTIVITY	Human, Mouse
PRESUMED REACTIVITY	Based on 100% sequence identity, this antibody is predicted to react with Rat, Zebrafish, X. laevis, Chicken, Bovine, Dog, Horse, Pig and Cat
AMOUNT	100 µl
CONCENTRATION	1000 µg/ml
STORAGE/SHELF LIFE	2 - 8° C / 1 year from date of receipt
PHYSICAL STATE	Liquid
BUFFER	Tris-citrate/phosphate buffer, pH 7 to 8 containing 0.09% Sodium Azide
ISOTYPE	IgG
ORIGIN	USA
PRODUCTION PROCEDURES	<p>Antibody was affinity purified using an epitope specific to QKI immobilized on solid support.</p> <p>The epitope recognized by A300-183A maps to the C-terminus of isoform 5 of human quaking homolog according to entry AAH19917.1 (GeneID 9444). The epitope is not found in isoforms 1, 2, 3, 4, 6, 7 or 7B according to TrEMBL entries Q9P0Y1, Q9P0Y0, Q9P0X6, Q9P0X8, Q96PU7, Q969L9 and Q96PU6, respectively.</p> <p>Immunoglobulin concentration was determined by extinction coefficient: absorbance at 280 nm of 1.4 equals 1.0 mg of IgG.</p>
APPLICATIONS	<p>Centrifuge tube to remove product from lid. Optimal working dilutions should be determined experimentally by the investigator. Prepare working dilution immediately before use.</p> <p>Western Blot 1:5,000 - 1:25,000</p> <p>Immunoprecipitation 2 - 10 µg/mg lysate</p> <p>Immunohistochemistry 1:500 - 1:2,000. Epitope retrieval with Tris-EDTA pH 9.0 is recommended for FFPE tissue sections.</p>
APPLICATION NOTES	<p>Western blot of immunoprecipitates performed using Normal Pig Serum (Cat. No. S100-020), Goat anti-Rabbit Light Chain HRP Conjugate (Cat. No. A120-113P) and 4-20% SDS-PAGE (link to IP-western blot protocol in Additional Info section below).</p> <p>Western blot of lysates performed using standard western blot reagents and 4-20% SDS-PAGE.</p>
IHC HUMAN CONTROLS	Breast Carcinoma, Testicular Seminoma
IHC MOUSE CONTROLS	Renal Cell Carcinoma
ADDITIONAL INFO	<p>https://www.bethyl.com/product/A300-183A</p> <p>Use the link above to view SDS, a current list of citations, and other product specific information.</p> <p>IP-western blot protocol: https://www.bethyl.com/content/protocol_IP_WB</p>

This document certifies that this product has met all of the quality control standards defined by Bethyl Laboratories, Inc.
Eric McIntush, PhD | Chief Scientific Officer Date: June 21, 2019

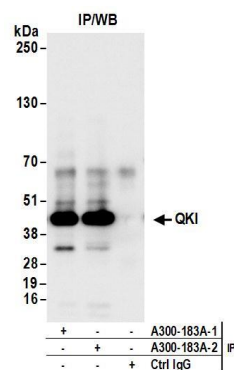


Detection of human and mouse QKI by western blot.

Samples: Whole cell lysate from HeLa (15 and 50 µg), HEK293T (50µg), and mouse NIH 3T3 (50µg) cells.

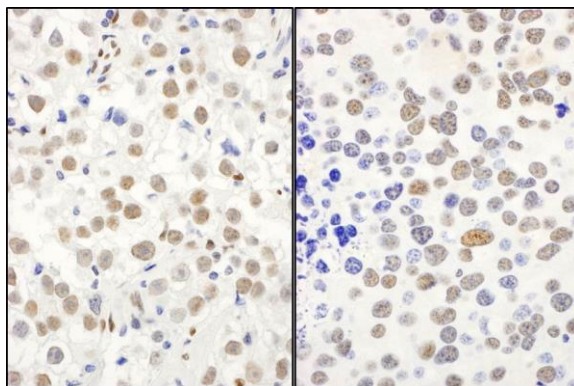
Antibodies: Affinity purified rabbit anti-QKI antibody A300-183A (lot A300-183A-2) used for WB at 0.04 µg/ml.

Detection: Chemiluminescence with an exposure time of 3 minutes.



Detection of human QKI by western blot of immunoprecipitates.

Samples: Whole cell lysate (1 mg for IP; 20% of IP loaded) from HeLa cells. *Antibodies:* Affinity purified rabbit anti-QKI antibody A300-183A (lot A300-183A-2) used for IP at 6 µg/mg lysate. QKI was also immunoprecipitated by a prior lot (A300-183A-1) of this antibody. For blotting immunoprecipitated QKI, A300-183A was used at 1 µg/ml. *Detection:* Chemiluminescence with an exposure time of 10 seconds.



Detection of human and mouse QKI by immunohistochemistry.

Sample: FFPE sections of human testicular seminoma (left) and mouse renal cell carcinoma (right). *Antibody:* Affinity purified rabbit anti-QKI (Cat. No. A300-183A Lot2) used at a dilution of 1:1,000 (1 µg/ml).

Detection: DAB