

Parafibromin Antibody

Rabbit Polyclonal

Antigen Affinity Purified

Protein ID Q6P1J9

Catalog No. A300-170A

GeneID 79577

Lot No. A300-170A-2



APPLICATIONS	WB, IP
SPECIES REACTIVITY	Human, Mouse
PRESUMED REACTIVITY	Based on 100% sequence identity, this antibody is predicted to react with Rat
AMOUNT	100 µl
CONCENTRATION	1000 µg/ml
STORAGE/SHELF LIFE	2 - 8° C / 1 year from date of receipt
PHYSICAL STATE	Liquid
BUFFER	Tris-citrate/phosphate buffer, pH 7 to 8 containing 0.09% Sodium Azide
ISOTYPE	IgG
ORIGIN	USA
PRODUCTION PROCEDURES	Antibody was affinity purified using an epitope specific to Parafibromin immobilized on solid support.

The epitope recognized by A300-170A maps to a region between residues 250 and 300 of human Parafibromin using the numbering given in TrEMBL entry Q6P1J9 (GeneID 79577).

Immunoglobulin concentration was determined by extinction coefficient: absorbance at 280 nm of 1.4 equals 1.0 mg of IgG.

APPLICATIONS Centrifuge tube to remove product from lid. Optimal working dilutions should be determined experimentally by the investigator. Prepare working dilution immediately before use.

Western Blot 1:5,000 - 1:20,000

Immunoprecipitation 1 - 4 µg/mg lysate

APPLICATION NOTES Western blot of immunoprecipitates performed using Normal Pig Serum (Cat. No. S100-020), Goat anti-Rabbit Light Chain HRP Conjugate (Cat. No. A120-113P) and 4-20% SDS-PAGE (link to IP-western blot protocol in Additional Info section below).

Western blot of lysates performed using standard western blot reagents and 4-20% SDS-PAGE.

ADDITIONAL INFO

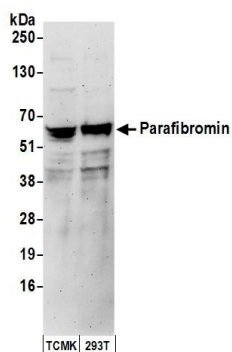
<https://www.bethyl.com/product/A300-170A>

Use the link above to view SDS, a current list of citations, and other product specific information.

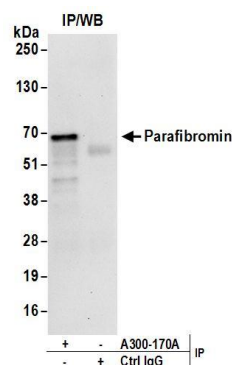
IP-western blot protocol: https://www.bethyl.com/content/protocol_IP_WB

This document certifies that this product has met all of the quality control standards defined by Bethyl Laboratories, Inc.
Eric McIntush, PhD | Chief Scientific Officer

Date: June 21, 2019



Detection of human and mouse Para fibromin by western blot. *Samples:* Whole cell lysate (50 µg) from mouse TCMK-1 and human HEK293T cells. *Antibodies:* Affinity purified rabbit anti-Parafibromin antibody A300-170A (lot A300-170A-2) used for WB at 0.04 µg/ml. *Detection:* Chemiluminescence with an exposure time of 3 minutes.



Detection of human Parafibromin by western blot of immunoprecipitates. *Samples:* Whole cell lysate (1 mg for IP; 20% of IP loaded) from HEK293T cells. *Antibodies:* Affinity purified rabbit anti-Parafibromin antibody A300-170A (lot A300-170A-2) used for IP at 6 µg/mg lysate. For blotting immunoprecipitated Parafibromin, A300-170A was used at 0.04 µg/ml. *Detection:* Chemiluminescence with an exposure time of 30 seconds.