

BID Antibody

Rabbit Polyclonal

Antigen Affinity Purified

Protein ID NP_932070.1

Catalog No. A300-168A

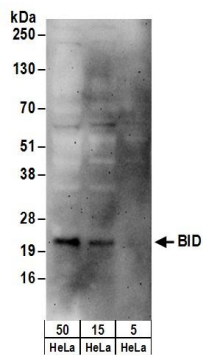
GeneID 637

Lot No. A300-168A-3



APPLICATIONS	WB
SPECIES REACTIVITY	Human
AMOUNT	100 µl
CONCENTRATION	1000 µg/ml
STORAGE/SHELF LIFE	2 - 8° C / 1 year from date of receipt
PHYSICAL STATE	Liquid
BUFFER	Tris-citrate/phosphate buffer, pH 7 to 8 containing 0.09% Sodium Azide
ISOTYPE	IgG
ORIGIN	USA
PRODUCTION PROCEDURES	Antibody was affinity purified using an epitope specific to human BID immobilized on solid support.. The epitope recognized by A300-168A maps to a region between residues 120 and 180 of human BH3 interacting domain death agonist using the numbering given in entry NP_932070.1 (GeneID 637). The epitope is found in isoforms 1, 2, and 3 of human BID. Immunoglobulin concentration was determined by extinction coefficient: absorbance at 280 nm of 1.4 equals 1.0 mg of IgG.
APPLICATIONS	Centrifuge tube to remove product from lid. Optimal working dilutions should be determined experimentally by the investigator. Prepare working dilution immediately before use. Western Blot 1:500 - 1:2,500
APPLICATION NOTES	Western blot of lysates performed using standard western blot reagents and 4-20% SDS-PAGE.
ADDITIONAL INFO	https://www.bethyl.com/product/A300-168A Use the link above to view SDS, a current list of citations, and other product specific information.

This document certifies that this product has met all of the quality control standards defined by Bethyl Laboratories, Inc.
Eric McIntush, PhD | Chief Scientific Officer Date: June 21, 2019



Detection of human BID by western blot. *Samples:* Whole cell lysate (5, 15 and 50 µg) from HeLa cells. *Antibodies:* Affinity purified rabbit anti-BID antibody A300-168A (lot A300-168A-3) used for WB at 1 µg/ml. *Detection:* Chemiluminescence with an exposure time of 3 minutes.