

Chk1 Antibody

Goat Polyclonal

Antigen Affinity Purified

Protein ID NP_001265.1

Catalog No. A300-161A

GeneID 1111

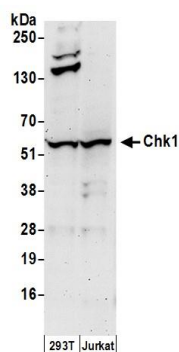
Lot No. A300-161A-1



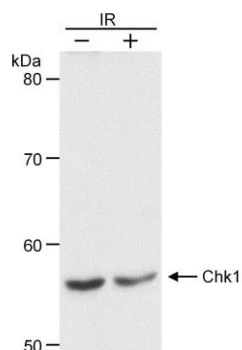
APPLICATIONS	WB				
SPECIES REACTIVITY	Human				
PRESUMED REACTIVITY	Based on 100% sequence identity, this antibody is predicted to react with Mouse and Rat				
AMOUNT	100 µl				
CONCENTRATION	1000 µg/ml				
STORAGE/SHELF LIFE	2 – 8° C / 1 year from date of receipt				
PHYSICAL STATE	Liquid				
BUFFER	Tris-citrate/phosphate buffer, pH 7 to 8 containing 0.09% Sodium Azide				
ISOTYPE	IgG				
ORIGIN	USA				
PRODUCTION PROCEDURES	<p>Antibody was affinity purified using an epitope specific to Chk1 immobilized on solid support.</p> <p>The epitope recognized by A300-161A maps to a region between residues 200 and 250 of human Checkpoint Kinase 1 using the numbering given in entry NP_001265.1 (GeneID 1111).</p> <p>Immunoglobulin concentration was determined by extinction coefficient: absorbance at 280 nm of 1.4 equals 1.0 mg of IgG.</p>				
APPLICATIONS	<p>Centrifuge tube to remove product from lid. Optimal working dilutions should be determined experimentally by the investigator. Prepare working dilution immediately before use.</p> <table><tr><td>Western Blot</td><td>1:2,500 – 1:15,000</td></tr><tr><td>Immunoprecipitation</td><td>Not recommended</td></tr></table>	Western Blot	1:2,500 – 1:15,000	Immunoprecipitation	Not recommended
Western Blot	1:2,500 – 1:15,000				
Immunoprecipitation	Not recommended				
APPLICATION NOTES	Western blot of lysates performed using standard western blot reagents and 4–20% SDS-PAGE.				
ADDITIONAL INFO	<p>https://www.bethyl.com/product/A300-161A</p> <p>Use the link above to view SDS, a current list of citations, and other product specific information.</p>				

This document certifies that this product has met all of the quality control standards defined by Bethyl Laboratories, Inc.
Eric McIntush, PhD | Chief Scientific Officer

Date: June 21, 2019



Detection of human Chk1 by western blot. *Samples:* Whole cell lysate (50 µg) from HEK293T and Jurkat cells prepared using NETN lysis buffer. *Antibody:* Affinity purified goat anti-Chk1 antibody A300-161A (lot A300-161A-1) used for WB at 0.4 µg/ml. *Detection:* Chemiluminescence with an exposure time of 3 minutes.



Detection of human Chk1 by western blot. *Samples:* Whole cell lysate (30 µg) from HeLa cells treated with 10 Gy ionizing radiation (IR) or untreated. *Antibody:* Affinity purified goat anti-Chk1 (Cat. No. A300-161A) used at 0.1 µg/ml. *Detection:* Chemiluminescence with 30 second exposure.