

# NF1 Antibody

Rabbit Polyclonal

Antigen Affinity Purified

Protein ID NP\_000258.1

Catalog No. A300-140A

GeneID 4763

Lot No. A300-140A-4

**APPLICATIONS** WB, IP

**SPECIES REACTIVITY** Human, Mouse

**PRESUMED REACTIVITY** Based on 100% sequence identity, this antibody is predicted to react with Rat

**AMOUNT** 100 µl

**CONCENTRATION** 1000 µg/ml

**STORAGE/SHELF LIFE** 2 – 8°C / 1 year from date of receipt

**PHYSICAL STATE** Liquid

**BUFFER** Tris-citrate/phosphate buffer, pH 7 to 8 containing 0.09% Sodium Azide

**ISOTYPE** IgG

**ORIGIN** USA

**PRODUCTION PROCEDURES** Antibody was affinity purified using an epitope specific to Neurofibromin immobilized on solid support.

The epitope recognized by A300-140A maps to a region between residue 2760 and the C-terminus (residue 2818) of human Neurofibromin 1 using the numbering given in entry NP\_000258.1 (GeneID 4763)

Immunoglobulin concentration was determined by extinction coefficient: absorbance at 280 nm of 1.4 equals 1.0 mg of IgG.

**APPLICATIONS** Centrifuge tube to remove product from lid. Optimal working dilutions should be determined experimentally by the investigator. Prepare working dilution immediately before use.

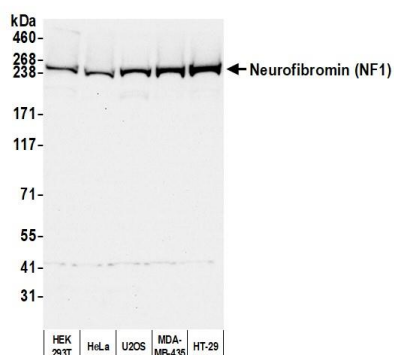
Western Blot 1:1,000 – 1:10,000

Immunoprecipitation 2 – 10 µg/mg lysate

**ADDITIONAL INFO** <https://www.bethyl.com/product/A300-140A>

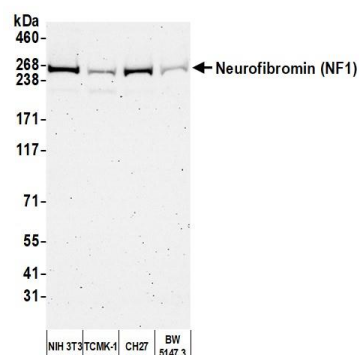
Use the link above to view SDS, a current list of citations, and other product specific information.  
IP-western blot protocol: [https://www.bethyl.com/content/protocol\\_IP\\_WB](https://www.bethyl.com/content/protocol_IP_WB)

This document certifies that this product has met all of the quality control standards defined by Bethyl Laboratories, Inc.  
Michael Spencer, PhD Date: April 28, 2022



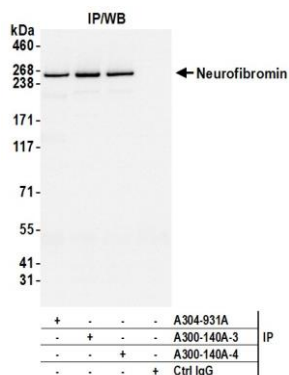
#### Detection of human Neurofibromin (NF1) by western blot.

**Samples:** Whole cell lysate (50 µg) from HEK293T, HeLa, U2OS, MDA-MB-435, and HT-29 cells prepared using NETN lysis buffer. **Antibody:** Affinity purified rabbit anti-Neurofibromin (NF1) antibody (A300-140A lot 4) used for WB at 0.1 µg/ml. **Detection:** Chemiluminescence with an exposure time of 10 seconds.



#### Detection of mouse Neurofibromin (NF1) by western blot.

**Samples:** Whole cell lysate (50 µg) from NIH 3T3, TCMK-1, CH27, and BW5147.3 cells prepared using NETN lysis buffer. **Antibody:** Affinity purified rabbit anti-Neurofibromin (NF1) antibody (A300-140A lot 4) used for WB at 0.1 µg/ml. **Detection:** Chemiluminescence with an exposure time of 3 minutes.



#### Detection of human Neurofibromin (NF1) by western blot of immunoprecipitates.

**Samples:** Whole cell lysate (1.0 mg per IP reaction; 20% of IP loaded) from HEK293T cells prepared using NETN lysis buffer. **Antibodies:** Affinity purified rabbit anti-Neurofibromin (NF1) antibody (A300-140A lot 4) used for IP at 6 µg per reaction. Neurofibromin (NF1) was also immunoprecipitated by a previous lot of this antibody (A300-140A lot 3) and a second antibody against a different epitope of Neurofibromin (NF1) (A304-931A-1). For blotting immunoprecipitated Neurofibromin (NF1), A300-140A was used at 1 µg/ml. **Detection:** Chemiluminescence with an exposure time of 1 second.