

# ATM Antibody

Goat Polyclonal

Antigen Affinity Purified

Catalog No. A300-136A

Lot No. A300-136A-2

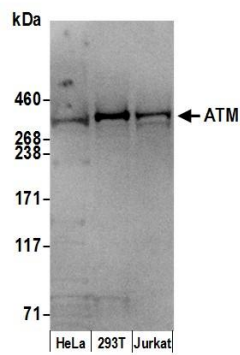
Protein ID NP\_000042.2

GeneID 472

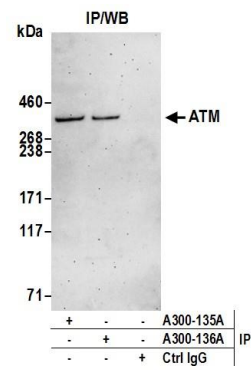


<b>APPLICATIONS</b>	WB, IP
<b>SPECIES REACTIVITY</b>	Human
<b>AMOUNT</b>	100 µl
<b>CONCENTRATION</b>	1000 µg/ml
<b>STORAGE/SHELF LIFE</b>	2 – 8° C / 1 year from date of receipt
<b>PHYSICAL STATE</b>	Liquid
<b>BUFFER</b>	Tris-citrate/phosphate buffer, pH 7 to 8 containing 0.09% Sodium Azide
<b>ISOTYPE</b>	IgG
<b>ORIGIN</b>	USA
<b>PRODUCTION PROCEDURES</b>	<p>Antibody was affinity purified using an epitope specific to ATM immobilized on solid support.</p> <p>The epitope recognized by A300-136A maps to a region between residues 2550 and 2600 of human Ataxia Telangiectasia Mutated using the numbering given in entry NP_000042.2 (GeneID 472).</p> <p>Immunoglobulin concentration was determined by extinction coefficient: absorbance at 280 nm of 1.4 equals 1.0 mg of IgG.</p>
<b>APPLICATIONS</b>	<p>Centrifuge tube to remove product from lid. Optimal working dilutions should be determined experimentally by the investigator. Prepare working dilution immediately before use.</p> <p>Western Blot 1:2,000 – 1:10,000</p> <p>Immunoprecipitation 2 – 5 µg/mg lysate</p>
<b>APPLICATION NOTES</b>	Western blot of lysates performed using standard western blot reagents and 3–8% SDS-PAGE.
<b>ADDITIONAL INFO</b>	<p><a href="https://www.bethyl.com/product/A300-136A">https://www.bethyl.com/product/A300-136A</a></p> <p>Use the link above to view SDS, a current list of citations, and other product specific information.</p>

This document certifies that this product has met all of the quality control standards defined by Bethyl Laboratories, Inc.  
Eric McIntush, PhD | Chief Scientific Officer Date: June 21, 2019



**Detection of human ATM by western blot.** *Samples:* Whole cell lysate (50 µg) from HeLa, HEK293T, and Jurkat cells prepared using NETN lysis buffer. *Antibody:* Affinity purified goat anti-ATM antibody A300-136A (lot A300-136A-2) used for WB at 0.4 µg/ml. *Detection:* Chemiluminescence with an exposure time of 30 seconds.



**Detection of human ATM by western blot of immunoprecipitates.** *Samples:* Whole cell lysate (1.0 mg per IP reaction; 20% of IP loaded) from HeLa cells prepared using NETN lysis buffer. *Antibodies:* Affinity purified goat anti-ATM antibody A300-136A (lot A300-136A-2) used for IP at 3 µg per reaction. ATM was also immunoprecipitated by goat anti-ATM antibody A300-135A. For blotting immunoprecipitated ATM, A300-136A was used at 1 µg/ml. *Detection:* Chemiluminescence with an exposure time of 3 minutes.