

CoREST Antibody

Rabbit Polyclonal

Antigen Affinity Purified

Protein ID NP_055971.1

Catalog No. A300-130A

GeneID 23186

Lot No. A300-130A-1



APPLICATIONS	WB, IHC
SPECIES REACTIVITY	Human
AMOUNT	100 µl
CONCENTRATION	1000 µg/ml
STORAGE/SHELF LIFE	2 – 8° C / 1 year from date of receipt
PHYSICAL STATE	Liquid
BUFFER	Tris-citrate/phosphate buffer, pH 7 to 8 containing 0.09% Sodium Azide
ISOTYPE	IgG
ORIGIN	USA
PRODUCTION PROCEDURES	Antibody was affinity purified using an epitope specific to CoREST immobilized on solid support.

The epitope recognized by A300-130A maps to a region between residues 425 and the C-terminus (residue 482) of human REST (RE1-silencing transcription factor) corepressor using the numbering given in entry NP_055971.1 (GeneID 23186)

Immunoglobulin concentration was determined by extinction coefficient: absorbance at 280 nm of 1.4 equals 1.0 mg of IgG.

APPLICATIONS Centrifuge tube to remove product from lid. Optimal working dilutions should be determined experimentally by the investigator. Prepare working dilution immediately before use.

Western Blot 1:2,500 – 1:15,000

Immunohistochemistry 1:500 – 1:2,000. Epitope retrieval with citrate buffer pH 6.0 is recommended for FFPE tissue sections.

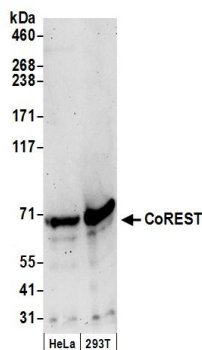
APPLICATION NOTES Western blot of lysates performed using standard western blot reagents and 4-20% SDS-PAGE.

IHC HUMAN CONTROLS Bone Marrow-Metastatic Carcinoma, Breast Carcinoma, Colon Carcinoma, Metastatic Lymph Node, Ovarian Carcinoma, Skin Basal Cell Carcinoma, Skin Squamous Cell Carcinoma, Stomach Adenocarcinoma, Testicular Seminoma

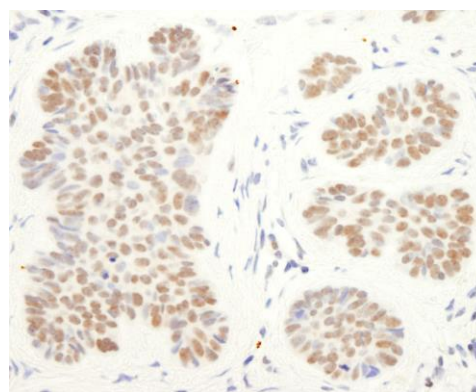
ADDITIONAL INFO <https://www.bethyl.com/product/A300-130A>

Use the link above to view SDS, a current list of citations, and other product specific information.

This document certifies that this product has met all of the quality control standards defined by Bethyl Laboratories, Inc.
Eric McIntush, PhD | Chief Scientific Officer Date: June 21, 2019



Detection of human CoREST by western blot. *Samples:* Whole cell lysate (50 μ g) from HeLa and HEK293T cells prepared using NETN lysis buffer. *Antibody:* Affinity purified rabbit anti-CoREST antibody A300-130A (lot A300-130A-1) used for WB at 0.66 μ g/ml. *Detection:* Chemiluminescence with an exposure time of 3 minutes.



Detection of human CoREST by immunohistochemistry. *Sample:* FFPE section of human skin carcinoma. *Antibody:* Affinity purified rabbit anti-CoREST (Cat. No. A300-130A) used at a dilution of 1:5,000 (0.2 μ g/ml). *Detection:* DAB