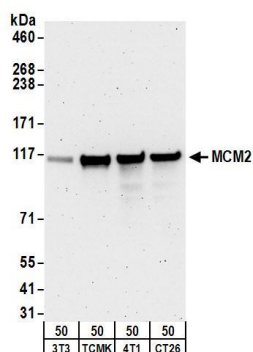


Detection of human MCM2 by western blot. *Sample:* Whole cell lysate (60 μ g) from HeLa cells. *Antibody:* Affinity purified goat anti-MCM2 A300-122A used at 0.25 μ g/ml. *Detection:* Chemiluminescence.



Detection of mouse MCM2 by western blot. *Samples:* Whole cell lysate (50 μ g) from NIH 3T3, TCМК-1, 4T1, and CT26.WT cells. *Antibodies:* Affinity purified goat anti-MCM2 antibody A300-122A (lot A300-122A-1) used for WB at 0.5 μ g/ml. *Detection:* Chemiluminescence with an exposure time of 3 minutes.