

# SETDB1 Antibody

Rabbit Polyclonal

Antigen Affinity Purified

Protein ID NP\_036564.2

Catalog No. A300-121A

GeneID 9869

Lot No. A300-121A-4

---

**APPLICATIONS** WB

**SPECIES REACTIVITY** Human

**AMOUNT** 100 µl

**CONCENTRATION** 1000 µg/ml

**STORAGE/SHELF LIFE** 2 – 8°C / 1 year from date of receipt

**PHYSICAL STATE** Liquid

**BUFFER** Tris-citrate/phosphate buffer, pH 7 to 8 containing 0.09% Sodium Azide

**ISOTYPE** IgG

**ORIGIN** USA

**PRODUCTION PROCEDURES** Antibody was affinity purified using an epitope from human SETDB1 immobilized on solid support.

The epitope recognized by A300-121A maps to a region between residues 1125 and 1175 of human SET Domain, Bifurcated 1 using the numbering given in entry NP\_036564.2 (GeneID 9869).

Immunoglobulin concentration was determined by extinction coefficient: absorbance at 280 nm of 1.4 equals 1.0 mg of IgG.

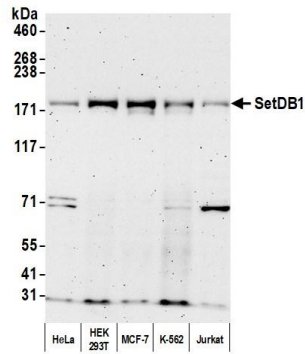
**APPLICATIONS** Centrifuge tube to remove product from lid. Optimal working dilutions should be determined experimentally by the investigator. Prepare working dilution immediately before use.

Western Blot 1:2,000 – 1:10,000

**ADDITIONAL INFO** <https://www.fortislife.com/p/A300-121A>

Use the link above to view SDS, a current list of citations, and other product specific information.

This document certifies that this product has met all of the quality control standards defined by Bethyl Laboratories, Inc.  
Michael Spencer, PhD Date: July 29, 2022



**Detection of human SetDB1 by western blot.** *Samples:* Whole cell lysate (25  $\mu$ g) from HeLa, HEK293T, MCF-7, K-562, and Jurkat cells prepared using NETN lysis buffer. *Antibody:* Affinity purified rabbit anti-SetDB1 antibody (A300-121A lot 4) used for WB at 0.1  $\mu$ g/ml. *Detection:* Chemiluminescence with an exposure time of 3 minutes.