

BLM Antibody

Goat Polyclonal

Antigen Affinity Purified

Protein ID NP_000048.1

Catalog No. A300-120A-T

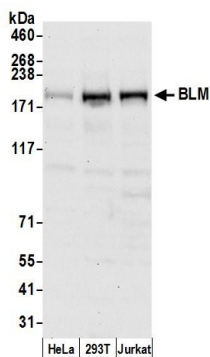
GeneID 641

Lot No. A300-120A-T-2



APPLICATIONS	WB, IP				
SPECIES REACTIVITY	Human				
AMOUNT	20 µl (2 blots)				
CONCENTRATION	40 µg/ml				
STORAGE/SHELF LIFE	2 - 8° C / 1 year from date of receipt				
PHYSICAL STATE	Liquid				
BUFFER	Tris-buffered Saline containing 0.1% BSA and 0.09% Sodium Azide				
ISOTYPE	IgG				
ORIGIN	USA				
PRODUCTION PROCEDURES	<p>Antibody was affinity purified using an epitope from human BLM immobilized on solid support.</p> <p>The epitope recognized by A300-120A-T maps to a region between residues 100 and 150 of human Bloom Syndrome using the numbering given in entry NP_000048.1 (GeneID 641).</p> <p>Immunoglobulin concentration was determined by extinction coefficient: absorbance at 280 nm of 1.4 equals 1.0 mg of IgG.</p>				
APPLICATIONS	<p>Centrifuge tube to remove product from lid. Optimal working dilutions should be determined experimentally by the investigator. Prepare working dilution immediately before use.</p> <table><tr><td>Western Blot</td><td>1:1000</td></tr><tr><td>Immunoprecipitation</td><td>The antibody contained within A300-120A-T has been qualified for use in immunoprecipitation; however, we recommend using the alternative formulation of this antibody found as product A300-120A.</td></tr></table>	Western Blot	1:1000	Immunoprecipitation	The antibody contained within A300-120A-T has been qualified for use in immunoprecipitation; however, we recommend using the alternative formulation of this antibody found as product A300-120A.
Western Blot	1:1000				
Immunoprecipitation	The antibody contained within A300-120A-T has been qualified for use in immunoprecipitation; however, we recommend using the alternative formulation of this antibody found as product A300-120A.				
APPLICATION NOTES	Western blot of lysates performed using standard western blot reagents and 4-8% SDS-PAGE.				
ADDITIONAL INFO	<p>https://www.bethyl.com/product/A300-120A-T</p> <p>Use the link above to view SDS, a current list of citations, and other product specific information.</p>				

This document certifies that this product has met all of the quality control standards defined by Bethyl Laboratories, Inc.
Eric McIntush, PhD | Chief Scientific Officer Date: June 21, 2019



Detection of human BLM by western blot. *Samples:* Whole cell lysate (50 μ g) from HeLa, HEK293T, and Jurkat cells prepared using NETN lysis buffer. *Antibody:* Affinity purified goat anti-BLM antibody A300-120A-T (lot A300-120A-T-2) used for WB at 1:1000. *Detection:* Chemiluminescence with an exposure time of 30 seconds.