

# Menin Antibody

Goat Polyclonal

Antigen Affinity Purified

Catalog No. A300-106A

Lot No. A300-106A-2

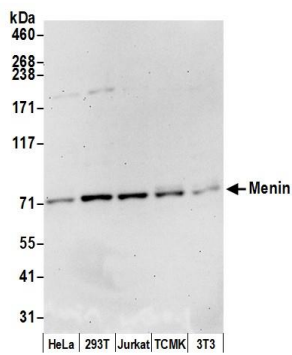
Protein ID NP\_000235.2

GeneID 4221

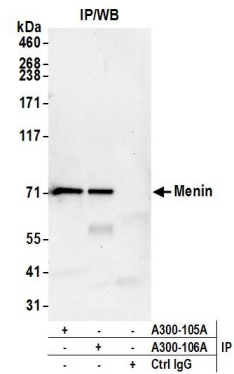


<b>APPLICATIONS</b>	WB, IP
<b>SPECIES REACTIVITY</b>	Human, Mouse
<b>PRESUMED REACTIVITY</b>	Based on 100% sequence identity, this antibody is predicted to react with Rat, Bovine and Dog
<b>AMOUNT</b>	100 µl
<b>CONCENTRATION</b>	1000 µg/ml
<b>STORAGE/SHELF LIFE</b>	2 – 8° C / 1 year from date of receipt
<b>PHYSICAL STATE</b>	Liquid
<b>BUFFER</b>	Tris-citrate/phosphate buffer, pH 7 to 8 containing 0.09% Sodium Azide
<b>ISOTYPE</b>	IgG
<b>ORIGIN</b>	USA
<b>PRODUCTION PROCEDURES</b>	<p>Antibody was affinity purified using an epitope specific to Menin immobilized on solid support.</p> <p>The epitope recognized by A300-106A maps to a region between residue 575 and the C-terminus (residue 615) of human Multiple Endocrine Neoplasia 1 using the numbering given in entry NP_000235.2 (GeneID 4221).</p> <p>Immunoglobulin concentration was determined by extinction coefficient: absorbance at 280 nm of 1.4 equals 1.0 mg of IgG.</p>
<b>APPLICATIONS</b>	<p>Centrifuge tube to remove product from lid. Optimal working dilutions should be determined experimentally by the investigator. Prepare working dilution immediately before use.</p> <p>Western Blot 1:2,000 – 1:20,000</p> <p>Immunoprecipitation 2 – 5 µg/mg lysate</p>
<b>APPLICATION NOTES</b>	Western blot of lysates performed using standard western blot reagents and 4–8% SDS-PAGE.
<b>ADDITIONAL INFO</b>	<p><a href="https://www.bethyl.com/product/A300-106A">https://www.bethyl.com/product/A300-106A</a></p> <p>Use the link above to view SDS, a current list of citations, and other product specific information.</p>

This document certifies that this product has met all of the quality control standards defined by Bethyl Laboratories, Inc.  
Eric McIntush, PhD | Chief Scientific Officer Date: June 24, 2019



**Detection of human and mouse Menin by western blot.**  
*Samples:* Whole cell lysate (15 µg) from HeLa, HEK293T, Jurkat, mouse TCMK-1, and mouse NIH 3T3 cells prepared using NETN lysis buffer. *Antibody:* Affinity purified goat anti-Menin antibody A300-106A (lot A300-106A-2) used for WB at 0.1 µg/ml. *Detection:* Chemiluminescence with an exposure time of 30 seconds.



**Detection of human Menin by western blot of immunoprecipitates.** *Samples:* Whole cell lysate (1.0 mg per IP reaction; 20% of IP loaded) from HEK293T cells prepared using NETN lysis buffer. *Antibodies:* Affinity purified goat anti-Menin antibody A300-106A (lot A300-106A-2) used for IP at 3 µg per reaction. Menin was also immunoprecipitated by rabbit anti-Menin antibody A300-105A. For blotting immunoprecipitated Menin, A300-106A was used at 0.4 µg/ml. *Detection:* Chemiluminescence with an exposure time of 10 seconds.