

Phospho Paxillin (S178) Antibody

Rabbit Polyclonal

Antigen Affinity Purified

Protein ID NP_002850.1

Catalog No. A300-100A-T

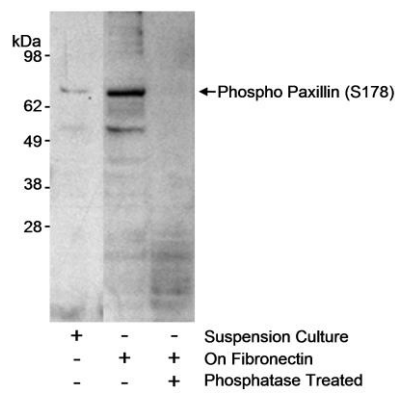
GeneID 5829

Lot No. A300-100A-T-1



APPLICATIONS	WB
SPECIES REACTIVITY	Mouse
PRESUMED REACTIVITY	Based on 100% sequence identity, this antibody is predicted to react with Human and Rat
AMOUNT	10 µl
CONCENTRATION	1000 µg/ml
STORAGE/SHELF LIFE	2 – 8° C / 1 year from date of receipt
PHYSICAL STATE	Liquid
BUFFER	Tris-citrate/phosphate buffer, pH 7 to 8 containing 0.09% Sodium Azide
ISOTYPE	IgG
ORIGIN	USA
PRODUCTION PROCEDURES	<p>Antibody was affinity purified using a phospho epitope specific to serine 178 of Paxillin immobilized on solid support.</p> <p>The epitope recognized by A300-100A-T maps surrounding serine 178 of human Paxillin using the numbering given in entry NP_002850.1 (GeneID 5829).</p> <p>Immunoglobulin concentration was determined by extinction coefficient: absorbance at 280 nm of 1.4 equals 1.0 mg of IgG.</p>
APPLICATIONS	<p>Centrifuge tube to remove product from lid. Optimal working dilutions should be determined experimentally by the investigator. Prepare working dilution immediately before use.</p> <p>Western Blot 1:1,000 – 1:5,000</p>
APPLICATION NOTES	Western blot of lysates performed using standard western blot reagents and 4–20% SDS-PAGE.
ADDITIONAL INFO	<p>https://www.bethyl.com/product/A300-100A-T</p> <p>Use the link above to view SDS, a current list of citations, and other product specific information.</p>

This document certifies that this product has met all of the quality control standards defined by Bethyl Laboratories, Inc.
Eric McIntush, PhD | Chief Scientific Officer Date: June 21, 2019



Detection of mouse phospho Paxillin (Ser178) by western blot. *Samples:* Whole cell lysate (approximately 2.4×10^5 cells/lane) from NIH 3T3 cells that were serum starved for 16 hours and then grown in suspension culture or plated on fibronectin (50 $\mu\text{g/ml}$). Whole cell lysate from cells grown on fibronectin was untreated or treated with lambda phosphatase. *Antibody:* Affinity purified rabbit anti-phospho Paxillin (Ser178) antibody A300-100A-T used for WB at 1 $\mu\text{g/ml}$. *Detection:* Chemiluminescence with an exposure time of 30 seconds.