

Phospho MCM2 (S108) Antibody

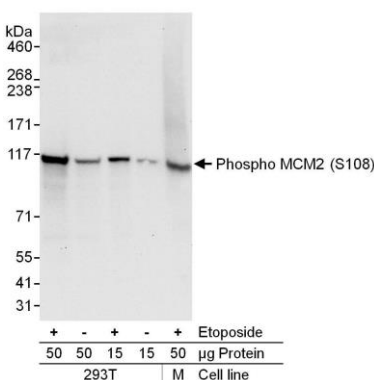
Rabbit Polyclonal

Antigen Affinity Purified	Protein ID	NP_004517.2
Catalog No. A300-094A	GeneID	4171
Lot No. A300-094A-4		

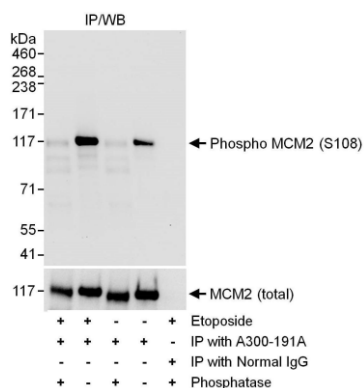


APPLICATIONS	WB, IHC				
SPECIES REACTIVITY	Human, Mouse				
AMOUNT	100 µl				
CONCENTRATION	1000 µg/ml				
STORAGE/SHELF LIFE	2 - 8° C / 1 year from date of receipt				
PHYSICAL STATE	Liquid				
BUFFER	Tris-citrate/phosphate buffer, pH 7 to 8 containing 0.09% Sodium Azide				
ISOTYPE	IgG				
ORIGIN	USA				
PRODUCTION PROCEDURES	<p>Antibody was affinity purified using a synthetic peptide representing phosphorylation at Serine 108 and surrounding residues of MCM2 immobilized on solid support.</p> <p>Immunogen A300-094A was a synthetic phosphorylated peptide, which represented a portion of human Minichromosomal Maintenance Deficient 2 surrounding Serine 108 according to the numbering given in entry NP_004517.2 (GeneID 4171).</p> <p>Immunoglobulin concentration was determined by extinction coefficient: absorbance at 280 nm of 1.4 equals 1.0 mg of IgG.</p>				
APPLICATIONS	<p>Centrifuge tube to remove product from lid. Optimal working dilutions should be determined experimentally by the investigator. Prepare working dilution immediately before use.</p> <table><tr><td>Western Blot</td><td>1:5,000 - 1:10,000</td></tr><tr><td>Immunohistochemistry</td><td>1:1,000 - 1:5,000. Epitope retrieval with citrate buffer pH 6.0 is recommended for FFPE tissue sections.</td></tr></table>	Western Blot	1:5,000 - 1:10,000	Immunohistochemistry	1:1,000 - 1:5,000. Epitope retrieval with citrate buffer pH 6.0 is recommended for FFPE tissue sections.
Western Blot	1:5,000 - 1:10,000				
Immunohistochemistry	1:1,000 - 1:5,000. Epitope retrieval with citrate buffer pH 6.0 is recommended for FFPE tissue sections.				
APPLICATION NOTES	Western blot of lysates performed using standard western blot reagents and 4-8% SDS-PAGE.				
IHC HUMAN CONTROLS	Breast Carcinoma, Colon Carcinoma, Glioblastoma, Non-Small Cell Lung Cancer, Ovarian Carcinoma, Prostate Carcinoma, Skin Squamous Cell Carcinoma, Testicular Seminoma				
IHC MOUSE CONTROLS	Colon Carcinoma CT26, Renal Cell Carcinoma, Teratoma				
ADDITIONAL INFO	<p>https://www.bethyl.com/product/A300-094A</p> <p>Use the link above to view SDS, a current list of citations, and other product specific information.</p>				

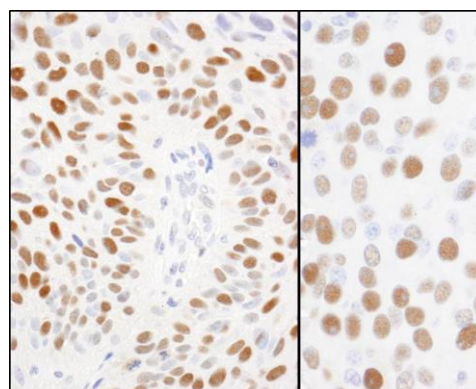
This document certifies that this product has met all of the quality control standards defined by Bethyl Laboratories, Inc.
Eric McIntush, PhD | Chief Scientific Officer Date: June 21, 2019



Detection of human and mouse Phospho MCM2 (S108) by western blot. *Samples:* Whole cell lysate (15 or 50 µg) from HEK293T cells or mouse NIH 3T3 (M) cells treated with 100 µM etoposide for 2 hours (+) or mock treated (-) cells. *Antibodies:* Affinity purified rabbit anti-phospho MCM2 (S108) antibody A300-094A (lot A300-094A-4) used for WB at 0.1 µg/ml. *Detection:* Chemiluminescence with an exposure time of 10 seconds.



Detection of human Phospho MCM2 (S108) by western blot of immunoprecipitates. *Samples:* Whole cell lysate (1 mg for IP; 20% of IP loaded) from HEK293T cells either mock treated (-) or treated (+) with etoposide (100 µM, 2h). *Antibodies:* MCM2 was immunoprecipitated using rabbit anti-MCM2 antibody A300-191A. Following immunoprecipitation the product of the IP reaction was either mock treated (-) or treated with phosphatases (+). Affinity purified rabbit anti-phospho MCM2 (S108) antibody A300-094A (lot A300-094A-4) was used for WB at 1 µg/ml. To examine total MCM2, the blot was stripped and then blotted with rabbit anti-MCM2 antibody A300-191A. *Detection:* Chemiluminescence with exposure times of 10 seconds (upper and lower panels).



Detection of human and mouse Phospho MCM2 (S108) by immunohistochemistry. *Sample:* FFPE sections of human breast carcinoma (left) and mouse renal cell carcinoma (right). *Antibody:* Affinity purified rabbit anti-phospho MCM2 (S108) (Cat. No. A300-094A Lot4) used at a dilution of 1:5,000 (0.2 µg/ml). *Detection:* DAB