

H2AX Antibody

Rabbit Polyclonal

Antigen Affinity Purified

Protein ID P16104

Catalog No. A300-083A

GeneID 3014

Lot No. A300-083A-5

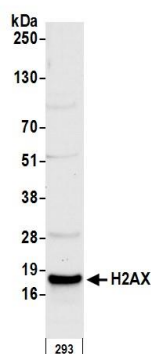


APPLICATIONS	WB, IHC
SPECIES REACTIVITY	Human, Mouse
AMOUNT	100 µl
CONCENTRATION	1000 µg/ml
STORAGE/SHELF LIFE	2 - 8° C / 1 year from date of receipt
PHYSICAL STATE	Liquid
BUFFER	Tris-citrate/phosphate buffer, pH 7 to 8 containing 0.09% Sodium Azide
ISOTYPE	IgG
ORIGIN	USA
PRODUCTION PROCEDURES	<p>Antibody was affinity purified using an epitope specific to H2AX immobilized on solid support.</p> <p>The epitope recognized by A300-083A maps to the C-terminus of human histone H2AX using the numbering given for Swiss-Prot entry P16104 (GeneID 3014).</p> <p>Immunoglobulin concentration was determined by extinction coefficient: absorbance at 280 nm of 1.4 equals 1.0 mg of IgG.</p>
APPLICATIONS	<p>Centrifuge tube to remove product from lid. Optimal working dilutions should be determined experimentally by the investigator. Prepare working dilution immediately before use.</p> <p>Western Blot 1:2,000 - 1:10,000</p> <p>Immunohistochemistry 1:500 to 1:2,000. Epitope retrieval with citrate buffer pH6.0 is recommended for FFPE tissue sections.</p>
APPLICATION NOTES	Western blot of lysates performed using standard western blot reagents and 4-12% SDS-PAGE.
IHC HUMAN CONTROLS	Breast Carcinoma, Ovarian Carcinoma, Testicular Seminoma
ADDITIONAL INFO	<p>https://www.bethyl.com/product/A300-083A</p> <p>Use the link above to view SDS, a current list of citations, and other product specific information.</p>

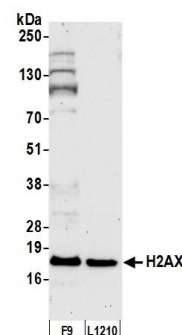
This document certifies that this product has met all of the quality control standards defined by Bethyl Laboratories, Inc.

Eric McIntush, PhD | Chief Scientific Officer

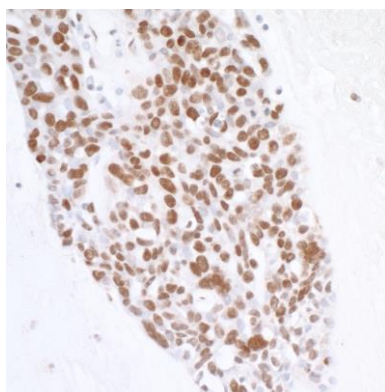
Date: June 21, 2019



Detection of human H2AX by western blot. *Samples:* Whole cell lysate (50 μ g) from HEK293T cells prepared using RIPA lysis buffer. *Antibody:* Affinity purified rabbit anti-H2AX antibody A300-083A (lot A300-083A-5) used for WB at 0.1 μ g/ml. *Detection:* Chemiluminescence with an exposure time of 10 seconds.



Detection of mouse H2AX by western blot. *Samples:* Whole cell lysate (50 μ g) from F9 and L1210 cells prepared using RIPA lysis buffer. *Antibody:* Affinity purified rabbit anti-H2AX antibody A300-083A (lot A300-083A-5) used for WB at 0.1 μ g/ml. *Detection:* Chemiluminescence with an exposure time of 30 seconds.



Detection of human H2AX by immunohistochemistry.

Sample: FFPE section of human ovarian carcinoma.

Antibody: Affinity purified rabbit anti-H2AX (Cat. No. A300-083A Lot 5) used at a dilution of 1:1,000 (1 μ g/ml).

Detection: DAB