

# H2AX Antibody

Rabbit Polyclonal

Antigen Affinity Purified Protein ID P16104

Catalog No. A300-082A GenelD 3014

Lot No. A300-082A-3

---

<b>APPLICATIONS</b>	WB, IHC, ICC, ICC-IF
<b>PRESUMED REACTIVITY</b>	Based on 100% sequence identity, this antibody is predicted to react with Human
<b>AMOUNT</b>	100 µl
<b>CONCENTRATION</b>	1000 µg/ml
<b>STORAGE/SHELF LIFE</b>	2 – 8°C / 1 year from date of receipt
<b>PHYSICAL STATE</b>	Liquid
<b>BUFFER</b>	Tris-citrate/phosphate buffer, pH 7 to 8 containing 0.09% Sodium Azide
<b>ISOTYPE</b>	IgG
<b>ORIGIN</b>	USA
<b>PRODUCTION PROCEDURES</b>	Antibody was affinity purified using an epitope specific to H2AX immobilized on solid support.

The epitope recognized by A300-082A maps to the C-terminus of human histone H2AX using the numbering given for Swiss-Prot entry P16104 (GenelD 3014).

Immunoglobulin concentration was determined by extinction coefficient: absorbance at 280 nm of 1.4 equals 1.0 mg of IgG.

**APPLICATIONS** Centrifuge tube to remove product from lid. Optimal working dilutions should be determined experimentally by the investigator. Prepare working dilution immediately before use.

Western Blot 1:2,000 – 1:10,000

Immunohistochemistry 1:1,000 – 1:5,000. Epitope retrieval with citrate buffer pH6.0 is recommended for FFPE tissue sections.

Immunocytochemistry 1:1,000 – 1:5,000. Epitope retrieval with citrate buffer pH6.0 is recommended for FFPE cell sections.

Immunofluorescence (ICC) 1:200 – 1:1000. Formaldehyde fixation is recommended. Permeabilization with Triton-X 100 is recommended for formaldehyde-fixed cells.

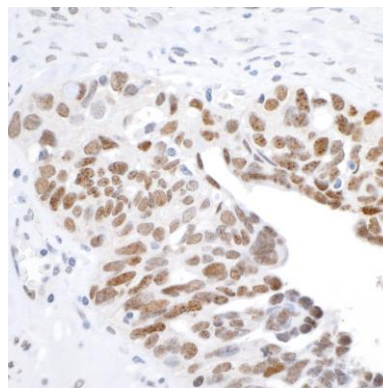
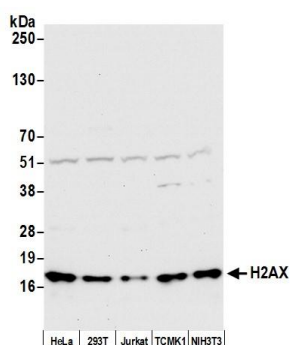
**IHC HUMAN CONTROLS** Breast Carcinoma, Ovarian Carcinoma, HCT 116 Cells

**IHC MOUSE CONTROLS** Colon Carcinoma CT26, RenCa Cells

**ADDITIONAL INFO** <https://www.fortislife.com/p/A300-082A>

Use the link above to view SDS, a current list of citations, and other product specific information.

This document certifies that this product has met all of the quality control standards defined by Bethyl Laboratories, Inc.  
Michael Spencer, PhD Date: August 5, 2022

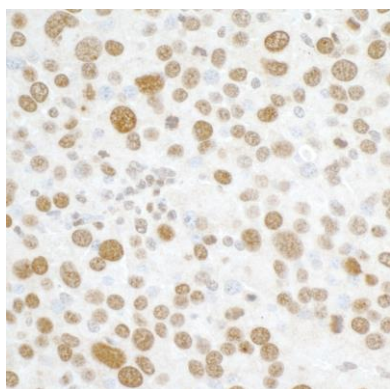


**Detection of human and mouse H2AX by western blot.**

*Samples:* Whole cell lysate (50 µg) from HeLa, HEK293T, Jurkat, TCMK-1, and NIH 3T3 cells prepared using NETN lysis buffer. *Antibody:* Affinity purified rabbit anti-H2AX antibody A300-082A (lot A300-082A-3) used for WB at 0.1 µg/ml. *Detection:* Chemiluminescence with an exposure time of 10 seconds.

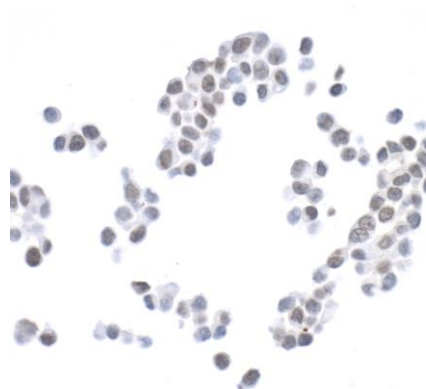
**Detection of human H2AX by immunohistochemistry.**

*Sample:* FFPE section of human ovarian carcinoma. *Antibody:* Affinity purified rabbit anti-H2AX (Cat. No. A300-082A lot 3) used at a dilution of 1:5,000 (0.2 µg/ml). *Detection:* DAB



**Detection of mouse H2AX by immunohistochemistry.**

*Sample:* FFPE section of mouse renal cell carcinoma. *Antibody:* Affinity purified rabbit anti-H2AX (Cat. No. A300-082A lot 3) used at a dilution of 1:5,000 (0.2 µg/ml). *Detection:* DAB



**Detection of human H2AX by immunohistochemistry.**

*Sample:* FFPE section of HCT 116 cell line. *Antibody:* Affinity purified rabbit anti-H2AX (Cat. No. A300-082A lot 3) used at a dilution of 1:5,000 (0.2 µg/ml). *Detection:* DAB