

Diaphanous 1 Antibody

Rabbit Polyclonal

Antigen Affinity Purified

Protein ID NP_005210.1

Catalog No. A300-078A

GeneID 1729

Lot No. A300-078A-1



APPLICATIONS	WB, IHC
SPECIES REACTIVITY	Human
AMOUNT	100 µl
CONCENTRATION	1000 µg/ml
STORAGE/SHELF LIFE	2 - 8° C / 1 year from date of receipt
PHYSICAL STATE	Liquid
BUFFER	Tris-citrate/phosphate buffer, pH 7 to 8 containing 0.09% Sodium Azide
ISOTYPE	IgG
ORIGIN	USA
PRODUCTION PROCEDURES	Antibody was affinity purified using an epitope specific to Diaphanous 1 immobilized on solid support.

The epitope recognized by A300-078A maps to a region between residues 1200 and the C-terminus (residue 1248) of human Diaphanous Homolog 1 using the numbering given in entry NP_005210.1 (GeneID 1729).

Immunoglobulin concentration was determined by extinction coefficient: absorbance at 280 nm of 1.4 equals 1.0 mg of IgG.

APPLICATIONS Centrifuge tube to remove product from lid. Optimal working dilutions should be determined experimentally by the investigator. Prepare working dilution immediately before use.

Western Blot 1:5,000 – 1:15,000

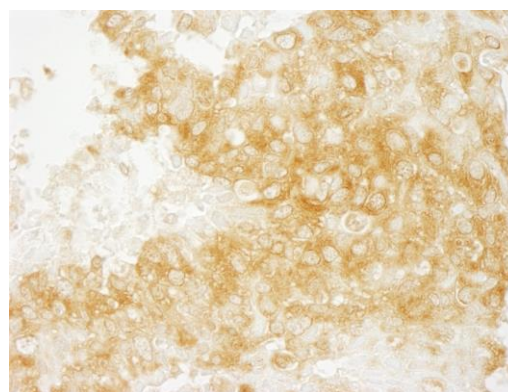
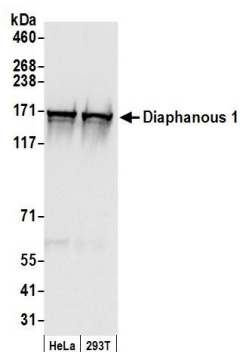
Immunohistochemistry 1:1,000 – 1:5,000. Epitope retrieval is not recommended.

APPLICATION NOTES Western blot of lysates performed using standard western blot reagents and 4-8% SDS-PAGE.

IHC HUMAN CONTROLS Breast Carcinoma, Colon Carcinoma, Ovarian Carcinoma

ADDITIONAL INFO <https://www.bethyl.com/product/A300-078A>
Use the link above to view SDS, a current list of citations, and other product specific information.

This document certifies that this product has met all of the quality control standards defined by Bethyl Laboratories, Inc.
Eric McIntush, PhD | Chief Scientific Officer Date: June 21, 2019

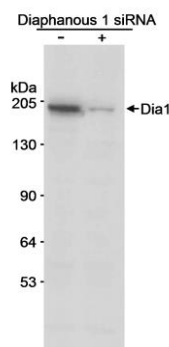


Detection of human Diaphanous 1 by western blot.

Samples: Whole cell lysate (50 µg) from HeLa and HEK293T cells prepared using NETN lysis buffer. *Antibody:* Affinity purified rabbit anti-Diaphanous 1 antibody A300-078A (lot A300-078A-1) used for WB at 0.66 µg/ml. *Detection:* Chemiluminescence with an exposure time of 1 second.

Detection of human Diaphanous by immunohistochemistry.

Sample: FFPE section of human breast carcinoma. *Antibody:* Affinity purified rabbit anti-Diaphanous (Cat. No. A300-078A) used at a dilution of 1:1,000 (1 µg/ml). *Detection:* DAB



Detection of human Diaphanous 1 by western blot.

Samples: Whole cell lysate (50 µg/lane) from untreated or siRNA treated HEK293T cells. *Antibody:* Affinity purified rabbit anti-Diaphanous 1 antibody A300-078A used at 0.1 µg/ml. *Detection:* Chemiluminescence with 10 second exposure.