

Aurora A Antibody

Rabbit Polyclonal

Antigen Affinity Purified	RefSeq ID	NP_003591.2
Catalog No. A300-071A	Uniprot ID	O14965
Lot No. A300-071A-3	GeneID	6790

APPLICATIONS	WB
SPECIES REACTIVITY	Human
AMOUNT	100 µl
CONCENTRATION	1000 µg/ml
STORAGE/SHELF LIFE	2 – 8°C / 1 year from date of receipt
PHYSICAL STATE	Liquid
BUFFER	Tris-citrate/phosphate buffer, pH 7 to 8 containing 0.09% Sodium Azide
ISOTYPE	IgG
ORIGIN	USA
PRODUCTION PROCEDURES	Antibody was affinity purified using an epitope specific to Aurora A immobilized on solid support.

The epitope recognized by A300-071A maps to a region between residues 75 and 125 of human Aurora A Kinase using the numbering given in entry NP_003591.2 (GeneID 6790).

Immunoglobulin concentration was determined by extinction coefficient: absorbance at 280 nm of 1.4 equals 1.0 mg of IgG.

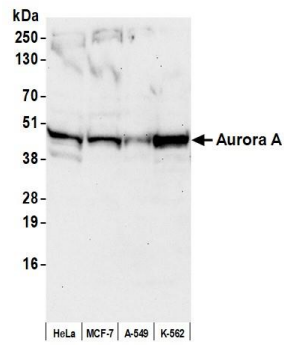
APPLICATIONS Centrifuge tube to remove product from lid. Optimal working dilutions should be determined experimentally by the investigator. Prepare working dilution immediately before use.

Western Blot 1:1,000 – 1:2,500

ADDITIONAL INFO <https://www.fortislife.com/p/A300-071A>

Use the link above to view SDS, a current list of citations, and other product specific information.

This document certifies that this product has met all of the quality control standards defined by Bethyl Laboratories, Inc.
Michael Spencer, PhD Date: March 6, 2023



Detection of human Aurora A by western blot. *Samples:* Whole cell lysate (50 μ g) from HeLa, MCF-7, A-549, and K-562 cells prepared using NETN lysis buffer. *Antibody:* Affinity purified rabbit anti-Aurora A antibody (A300-071A lot 3) used for WB at 1 μ g/ml. *Detection:* Chemiluminescence with an exposure time of 3 minutes.