

Aurora A Antibody

Rabbit Polyclonal

Antigen Affinity Purified	RefSeq ID	NP_003591.2
Catalog No. A300-070A	Uniprot ID	O14965
Lot No. A300-070A-7	GeneID	6790

APPLICATIONS	IP
SPECIES REACTIVITY	Human
AMOUNT	100 µl
CONCENTRATION	1000 µg/ml
STORAGE/SHELF LIFE	2 – 8°C / 1 year from date of receipt
PHYSICAL STATE	Liquid
BUFFER	Tris–citrate/phosphate buffer, pH 7 to 8 containing 0.09% Sodium Azide
ISOTYPE	IgG
ORIGIN	USA
PRODUCTION PROCEDURES	Antibody was affinity purified using an epitope specific to Aurora A immobilized on solid support.

The epitope recognized by A300-070A maps to a region between residues 50 and 100 of human Aurora A Kinase using the numbering given in entry NP_003591.2 (GeneID 6790).

Immunoglobulin concentration was determined by extinction coefficient: absorbance at 280 nm of 1.4 equals 1.0 mg of IgG.

APPLICATIONS Centrifuge tube to remove product from lid. Optimal working dilutions should be determined experimentally by the investigator. Prepare working dilution immediately before use.

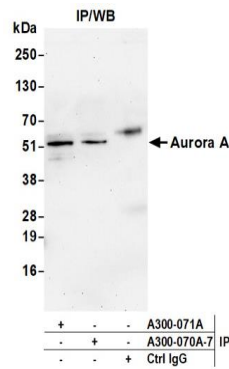
Western Blot Not recommended. Use rabbit anti-Aurora A antibody A300-071A.

Immunoprecipitation 2 – 10 µg/mg lysate.

ADDITIONAL INFO <https://www.fortislife.com/p/A300-070A>

Use the link above to view SDS, a current list of citations, and other product specific information.

This document certifies that this product has met all of the quality control standards defined by Bethyl Laboratories, Inc.
Michael Spencer, PhD Date: November 15, 2022



Detection of human Aurora A by western blot of immunoprecipitates. *Samples:* Whole cell lysate (1.0 mg per IP reaction; 20% of IP loaded) from HeLa cells prepared using NETN lysis buffer. *Antibodies:* Affinity purified rabbit anti-Aurora A antibody (A300-070A lot 7) used for IP at 6 μ g per reaction. Aurora A was also immunoprecipitated by a second antibody against a different epitope of Aurora A (A300-071A). For blotting immunoprecipitated Aurora A, A300-070A was used at 1 μ g/ml. *Detection:* Chemiluminescence with an exposure time of 3 minutes.