

SMC4 Antibody

Rabbit Polyclonal

Antigen Affinity Purified

Protein ID NP_005487.2

Catalog No. A300-064A

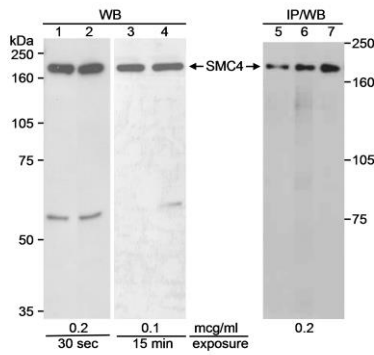
GeneID 10051

Lot No. A300-064A-2



APPLICATIONS	WB, IP, ICC
SPECIES REACTIVITY	Human
AMOUNT	100 µl
CONCENTRATION	1000 µg/ml
STORAGE/SHELF LIFE	2 – 8° C / 1 year from date of receipt
PHYSICAL STATE	Liquid
BUFFER	Tris-citrate/phosphate buffer, pH 7 to 8 containing 0.09% Sodium Azide
ISOTYPE	IgG
ORIGIN	USA
PRODUCTION PROCEDURES	<p>Antibody was affinity purified using an epitope specific to SMC4 immobilized on solid support.</p> <p>The epitope recognized by A300-064A maps to a region between residue 1225 and the C-terminus (residue 1288) of human Structural Maintenance of Chromosomes 4 using the numbering given in entry NP_005487.2 (GeneID 10051).</p> <p>Immunoglobulin concentration was determined by extinction coefficient: absorbance at 280 nm of 1.4 equals 1.0 mg of IgG.</p>
APPLICATIONS	<p>Centrifuge tube to remove product from lid. Optimal working dilutions should be determined experimentally by the investigator. Prepare working dilution immediately before use.</p> <p>Western Blot 1:1,000 – 1:10,000</p> <p>Immunoprecipitation 2 – 10 µg/mg lysate</p> <p>Immunocytochemistry 1:200 – 1:400</p>
APPLICATION NOTES	<p>Western blot of immunoprecipitates performed using Normal Pig Serum (Cat. No. S100-020), Goat anti-Rabbit Light Chain HRP Conjugate (Cat. No. A120-113P) and 4-8% SDS-PAGE (link to IP-western blot protocol in Additional Info section below).</p> <p>Western blot of lysates performed using standard western blot reagents and 4-8% SDS-PAGE.</p>
ADDITIONAL INFO	<p>https://www.bethyl.com/product/A300-064A</p> <p>Use the link above to view SDS, a current list of citations, and other product specific information. IP-western blot protocol: https://www.bethyl.com/content/protocol_IP_WB</p>

This document certifies that this product has met all of the quality control standards defined by Bethyl Laboratories, Inc.
Eric McIntush, PhD | Chief Scientific Officer Date: June 21, 2019



Detection of human SMC4 by western blot and immunoprecipitation. *Samples:* Whole cell lysate (90 µg for WB; 0.5 mg for IP/WB) from HEK293T cells (lanes 1, 3 and 5), normal human lymphoblasts (lane 2) or SMC4 transfected 239T cells (lanes 4, 6 and 7) separated on an 8% SDS-PAGE gel. *Antibodies:* Affinity purified rabbit anti-SMC4 A300-064A used at 0.2 or 0.1 µg/ml for WB and 5 µg for IP. *Detection:* Chemiluminescence with the indicated exposure times.