

SMC4 Antibody

Rabbit Polyclonal

Antigen Affinity Purified

Protein ID NP_005487.2

Catalog No. A300-063A

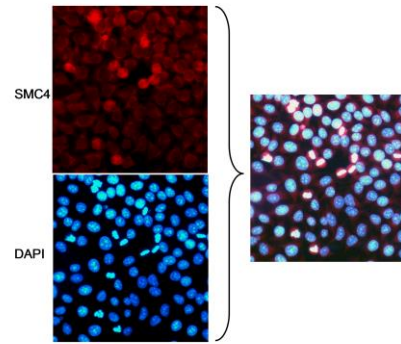
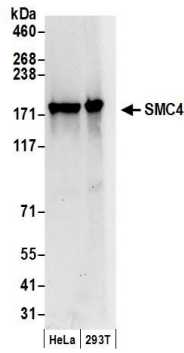
GeneID 10051

Lot No. A300-063A-2



APPLICATIONS	WB, ICC-IF				
SPECIES REACTIVITY	Human				
PRESUMED REACTIVITY	Based on 100% sequence identity, this antibody is predicted to react with Mouse				
AMOUNT	100 µl				
CONCENTRATION	1000 µg/ml				
STORAGE/SHELF LIFE	2 - 8° C / 1 year from date of receipt				
PHYSICAL STATE	Liquid				
BUFFER	Tris-citrate/phosphate buffer, pH 7 to 8 containing 0.09% Sodium Azide				
ISOTYPE	IgG				
ORIGIN	USA				
PRODUCTION PROCEDURES	<p>Antibody was affinity purified using an epitope specific to SMC4 immobilized on solid support.</p> <p>The epitope recognized by A300-063A maps to a region between residues 600 and 650 of human Structural Maintenance of Chromosomes 4 using the numbering given in entry NP_005487.2 (GeneID 10051).</p> <p>Immunoglobulin concentration was determined by extinction coefficient: absorbance at 280 nm of 1.4 equals 1.0 mg of IgG.</p>				
APPLICATIONS	<p>Centrifuge tube to remove product from lid. Optimal working dilutions should be determined experimentally by the investigator. Prepare working dilution immediately before use.</p> <table><tr><td>Western Blot</td><td>1:1,000 – 1:10,000</td></tr><tr><td>Immunofluorescence (ICC)</td><td>1:500 – 1:2,000</td></tr></table>	Western Blot	1:1,000 – 1:10,000	Immunofluorescence (ICC)	1:500 – 1:2,000
Western Blot	1:1,000 – 1:10,000				
Immunofluorescence (ICC)	1:500 – 1:2,000				
APPLICATION NOTES	Western blot of lysates performed using standard western blot reagents and 4-8% SDS-PAGE.				
ADDITIONAL INFO	<p>https://www.bethyl.com/product/A300-063A</p> <p>Use the link above to view SDS, a current list of citations, and other product specific information.</p>				

This document certifies that this product has met all of the quality control standards defined by Bethyl Laboratories, Inc.
Eric McIntush, PhD | Chief Scientific Officer Date: June 24, 2019



Detection of human SMC4 by western blot. *Samples:* Whole cell lysate (50 μ g) from HeLa and HEK293T cells prepared using NETN lysis buffer. *Antibodies:* Affinity purified rabbit anti-SMC4 antibody A300-063A (lot A300-063A-2) used for WB at 0.1 μ g/ml. *Detection:* Chemiluminescence with an exposure time of 10 seconds.

Localization of SMC4 to Mitotic Chromosomes by immunocytochemistry. *Samples:* HeLa cells grown on coverslips, fixed with methanol/acetone and blocked with 3% BSA in PBS. *Antibody:* Affinity purified rabbit anti-SMC4 antibody A300-063A used at 5 μ g/ml. *Detection:* Rhodamine labeled anti-rabbit secondary antibody. Cells were counterstained with DAPI.