

Phospho XRCC1 (S518/T519/T523) Antibody

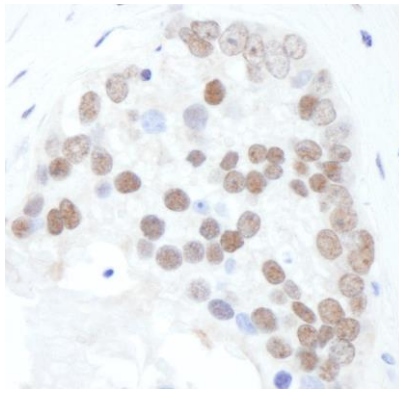
Rabbit Polyclonal

Antigen Affinity Purified	Protein ID	P18887
Catalog No. A300-059A	GeneID	7515
Lot No. A300-059A-1		



APPLICATIONS	WB, IHC				
SPECIES REACTIVITY	Human				
AMOUNT	100 µl				
CONCENTRATION	1000 µg/ml				
STORAGE/SHELF LIFE	2 - 8° C / 1 year from date of receipt				
PHYSICAL STATE	Liquid				
BUFFER	Tris-citrate/phosphate buffer, pH 7 to 8 containing 0.09% Sodium Azide				
ISOTYPE	IgG				
ORIGIN	USA				
PRODUCTION PROCEDURES	<p>Antibody was affinity purified using an epitope specific to phosphorylation at Ser 518, Thr 519 and Thr 523 of XRCC1 immobilized on solid support.</p> <p>The epitope recognized by A300-059A maps to a region of surrounding residues Ser 518, Thr 519 and Thr 523 of human X-ray Repair Complementing protein 1 using the numbering given in SwissProt entry P18887 (GeneID 7515).</p> <p>Immunoglobulin concentration was determined by extinction coefficient: absorbance at 280 nm of 1.4 equals 1.0 mg of IgG.</p>				
APPLICATIONS	<p>Centrifuge tube to remove product from lid. Optimal working dilutions should be determined experimentally by the investigator. Prepare working dilution immediately before use.</p> <table><tr><td>Western Blot</td><td>1:1,000 - 1:5,000</td></tr><tr><td>Immunohistochemistry</td><td>1:2,000 - 1:10,000. Epitope retrieval with citrate buffer pH 6.0 is recommended for FFPE tissue sections.</td></tr></table>	Western Blot	1:1,000 - 1:5,000	Immunohistochemistry	1:2,000 - 1:10,000. Epitope retrieval with citrate buffer pH 6.0 is recommended for FFPE tissue sections.
Western Blot	1:1,000 - 1:5,000				
Immunohistochemistry	1:2,000 - 1:10,000. Epitope retrieval with citrate buffer pH 6.0 is recommended for FFPE tissue sections.				
APPLICATION NOTES	Western blot of lysates performed using standard western blot reagents and 4-8% SDS-PAGE.				
IHC HUMAN CONTROLS	Bone Marrow-Metastatic Carcinoma, Breast Carcinoma, Colon Carcinoma, Ovarian Carcinoma, Prostate Carcinoma, Stomach Adenocarcinoma				
ADDITIONAL INFO	<p>https://www.bethyl.com/product/A300-059A</p> <p>Use the link above to view SDS, a current list of citations, and other product specific information.</p>				

This document certifies that this product has met all of the quality control standards defined by Bethyl Laboratories, Inc.
Eric McIntush, PhD | Chief Scientific Officer Date: June 21, 2019



Detection of human Phospho-ERCC1 (S518/T519/T523) by immunohistochemistry. *Sample:* FFPE section of human prostate carcinoma. *Antibody:* Affinity purified rabbit anti-Phospho-XRCC1 (S518/T519/T523) (Cat. No. A300-059A Lot1) used at a dilution of 1:5,000 (0.2µg/ml). *Detection:* DAB