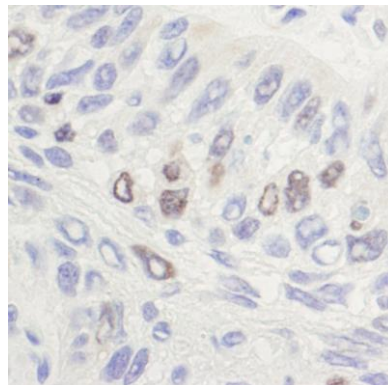


**Detection of human TOPO-II-Alpha by western blot.**

*Samples:* Whole cell lysate (25 µg) from Jurkat, HeLa, and HEK293T cells prepared using NETN lysis buffer. *Antibody:* Affinity purified rabbit anti-TOPO-II-Alpha antibody A300-054A (lot A300-054A-2) used for WB at 0.04 µg/ml. *Detection:* Chemiluminescence with an exposure time of 10 seconds.

**Detection of human TOPO-II-Alpha by western blot of immunoprecipitates.**

*Samples:* Whole cell lysate (1.0 mg per IP reaction; 20% of IP loaded) from Jurkat cells prepared using NETN lysis buffer. *Antibodies:* Affinity purified rabbit anti-TOPO-II-Alpha antibody A300-054A (lot A300-054A-2) used for IP at 6 µg per reaction. TOPO-II-Alpha was also immunoprecipitated by a previous lot of this antibody (lot A300-054A-1). For blotting immunoprecipitated TOPO-II-Alpha, A300-054A was used at 0.04 µg/ml. *Detection:* Chemiluminescence with an exposure time of 1 second.



**Detection of human Topo II Alpha by immunohistochemistry.**

*Sample:* FFPE section of human laryngeal squamous cell carcinoma. *Antibody:* Affinity purified rabbit anti-Topo II alpha (Cat. No. A300-054A lot 1) used at a dilution of 1:1,000 (1 µg/ml). *Detection:* DAB