

MDC1 Antibody

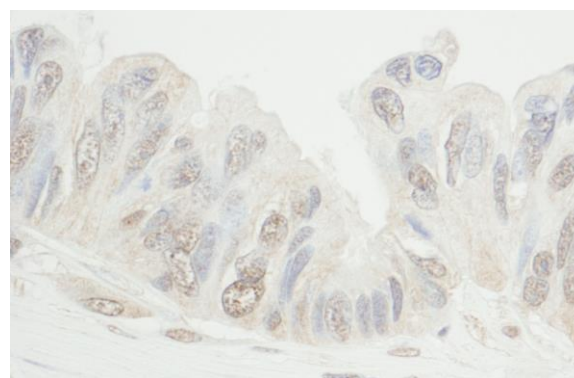
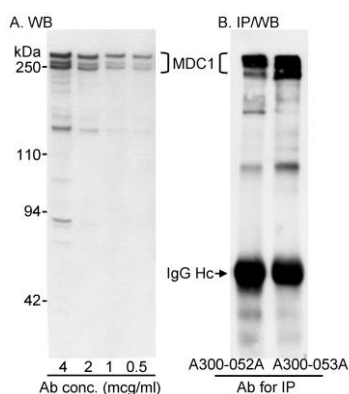
Rabbit Polyclonal

Antigen Affinity Purified Protein ID NP_055456.1
Catalog No. A300-052A GeneID 9656
Lot No. A300-052A-1



APPLICATIONS	WB, IP, IHC
SPECIES REACTIVITY	Human
AMOUNT	100 µl
CONCENTRATION	1000 µg/ml
STORAGE/SHELF LIFE	2 – 8° C / 1 year from date of receipt
PHYSICAL STATE	Liquid
BUFFER	Tris-citrate/phosphate buffer, pH 7 to 8 containing 0.09% Sodium Azide
ISOTYPE	IgG
ORIGIN	USA
PRODUCTION PROCEDURES	<p>Antibody was affinity purified using an epitope specific to MDC1 immobilized on solid support.</p> <p>The epitope recognized by A300-052A maps to a region between residues 925 and 975 of human Mediator of DNA Damage Checkpoint 1 using the numbering given in entry NP_055456.1 (GeneID 9656).</p> <p>Immunoglobulin concentration was determined by extinction coefficient: absorbance at 280 nm of 1.4 equals 1.0 mg of IgG.</p>
APPLICATIONS	<p>Centrifuge tube to remove product from lid. Optimal working dilutions should be determined experimentally by the investigator. Prepare working dilution immediately before use.</p> <p>Western Blot 1:1,000 – 1:10,000</p> <p>Immunoprecipitation 2 – 4 µg/mg lysate</p> <p>Immunohistochemistry 1:500 – 1:2,000. Epitope retrieval with citrate buffer pH 6.0 is recommended for FFPE tissue sections.</p>
APPLICATION NOTES	<p>Western blot of immunoprecipitates performed using Normal Pig Serum (Cat. No. S100-020), Goat anti-Rabbit Light Chain HRP Conjugate (Cat. No. A120-113P) and 4-8% SDS-PAGE (link to IP-western blot protocol in Additional Info section below).</p> <p>Western blot of lysates performed using standard western blot reagents and 4-8% SDS-PAGE.</p>
IHC HUMAN CONTROLS	Laryngeal Squamous Cell Carcinoma, Metastatic Lymph Node, Ovarian Carcinoma
ADDITIONAL INFO	<p>https://www.bethyl.com/product/A300-052A</p> <p>Use the link above to view SDS, a current list of citations, and other product specific information.</p> <p>IP-western blot protocol: https://www.bethyl.com/content/protocol_IP_WB</p>

This document certifies that this product has met all of the quality control standards defined by Bethyl Laboratories, Inc.
Eric McIntush, PhD | Chief Scientific Officer Date: June 21, 2019



Detection of human MDC1 by western blot and Immunoprecipitation. *Samples:* A) Nuclear extract (50 μ g) from HeLa cells. B) Whole cell lysate from HEK 293 cells. *Antibodies:* A) Affinity purified rabbit anti-MDC1 antibody A300-052A used at the indicated concentrations for WB. B) Affinity purified rabbit anti-MDC1 antibodies A300-052A and A300-053A used at 3.3 μ g/mg lysate for IP followed by WB using A300-051A at 0.1 μ g/ml. *Detection:* Chemiluminescence with exposure times less than 5 min.

Detection of human MDC1 by immunohistochemistry. *Sample:* FFPE section of human ovarian carcinoma. *Antibody:* Affinity purified rabbit anti-MDC1 (Cat. No. A300-052A Lot1) used at a dilution of 1:1,000 (1 μ g/ml). *Detection:* DAB