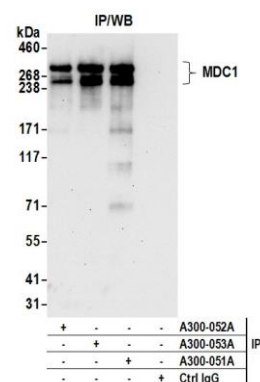


Detection of human MDC1 by western blot. *Samples:* Whole cell lysate (15 and 50 µg) from HeLa cells prepared using NETN lysis buffer. *Antibody:* Affinity purified rabbit anti-MDC1 antibody A300-051A (lot A300-051A-3) used for WB at 0.1 µg/ml. *Detection:* Chemiluminescence with an exposure time of 3 minutes.



Detection of human MDC1 by western blot of immunoprecipitates. *Samples:* Whole cell lysate (1.0 mg per IP reaction; 20% of IP loaded) from HeLa cells. *Antibodies:* Affinity purified rabbit anti-MDC1 antibody A300-051A (lot A300-051A-3) used for IP at 3 µg per reaction. MDC1 was also immunoprecipitated by rabbit anti-MDC1 antibodies A300-052A and A300-053A. For blotting immunoprecipitated MDC1, A300-051A was used at 0.4 µg/ml. *Detection:* Chemiluminescence with an exposure time of 30 seconds.