

Phospho SMC1 (S957) Antibody

Rabbit Polyclonal

Antigen Affinity Purified

Protein ID NP_006297.2

Catalog No. A300-045A

GeneID 8243

Lot No. A300-045A-3



APPLICATIONS	WB, IP
SPECIES REACTIVITY	Human
PRESUMED REACTIVITY	Based on 100% sequence identity, this antibody is predicted to react with Bovine
AMOUNT	100 µl
CONCENTRATION	1000 µg/ml
STORAGE/SHELF LIFE	2 – 8° C / 1 year from date of receipt
PHYSICAL STATE	Liquid
BUFFER	Tris-citrate/phosphate buffer, pH 7 to 8 containing 0.09% Sodium Azide
ISOTYPE	IgG
ORIGIN	USA
PRODUCTION PROCEDURES	Antibody was affinity purified using an epitope specific to phosphorylation of SMC1 at serine 957 immobilized on solid support.

Immunogen for A300-045A was a phosphorylated synthetic peptide, which represented a portion of human Structural Maintenance of Chromosomes 1 (GeneID 8243) around serine 957 according to the numbering given in entry NP_006297.2.

Immunoglobulin concentration was determined by extinction coefficient: absorbance at 280 nm of 1.4 equals 1.0 mg of IgG.

APPLICATIONS Centrifuge tube to remove product from lid. Optimal working dilutions should be determined experimentally by the investigator. Prepare working dilution immediately before use.

Western Blot 1:200 – 1:2,000

Immunoprecipitation 2 – 6 µg/mg lysate

APPLICATION NOTES Western blot of immunoprecipitates performed using Normal Pig Serum (Cat. No. S100-020), Goat anti-Rabbit Light Chain HRP Conjugate (Cat. No. A120-113P) and 4-8% SDS-PAGE (link to IP-western blot protocol in Additional Info section below).

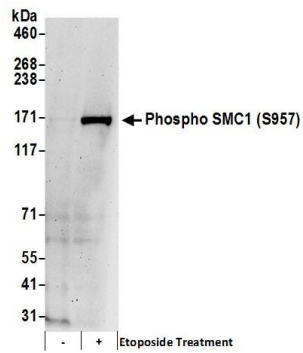
Western blot of lysates performed using standard western blot reagents and 4-8% SDS-PAGE.

ADDITIONAL INFO <https://www.bethyl.com/product/A300-045A>

Use the link above to view SDS, a current list of citations, and other product specific information.

IP-western blot protocol: https://www.bethyl.com/content/protocol_IP_WB

This document certifies that this product has met all of the quality control standards defined by Bethyl Laboratories, Inc.
Eric McIntush, PhD | Chief Scientific Officer Date: June 21, 2019



Detection of human Phospho SMC1 (S957) by western blot. *Samples:* Whole cell lysate (50 μ g) from HEK293T cells treated with 100 μ M etoposide for 4 hours (+) or mock treated (-) cells. *Antibody:* Affinity purified rabbit anti-Phospho SMC1 (S957) antibody A300-045A (lot A300-045A-3) used for WB at 0.5 μ g/ml. *Detection:* Chemiluminescence with an exposure time of 3 minutes.