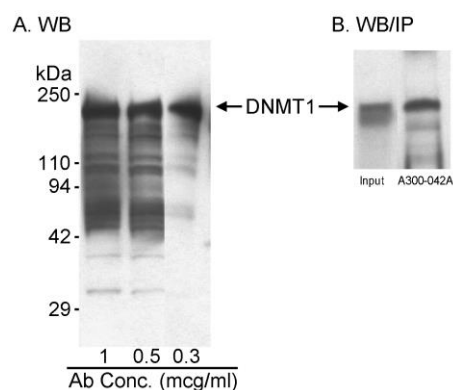


Detection of human DNMT1 by western blot. *Samples:* Whole cell lysate (50 μ g) from HeLa and Jurkat cells prepared using NETN lysis buffer. *Antibodies:* Affinity purified rabbit anti-DNMT1 antibody A300-041A (lot A300-041A-1) used for WB at 0.05 μ g/ml. *Detection:* Chemiluminescence with an exposure time of 30 seconds.



Detection of human DNMT1 by western blot and immunoprecipitation. *Samples:* Nuclear extract [50 μ g/lane for A; 10 μ g (input) or 1 mg (A300-042A IP) for B] from HeLa cells. *Antibodies:* A. Affinity purified rabbit anti-DNMT1 antibody A300-041A used at the indicated concentrations for WB. B. DNMT1 immunoprecipitated with affinity purified rabbit anti-DNMT1 antibody A300-042A then detected with affinity purified rabbit anti-DNMT1 antibody A300-041A used at 0.2 μ g/ml for WB. *Detection:* Chemiluminescence with an exposure time of 2 seconds.